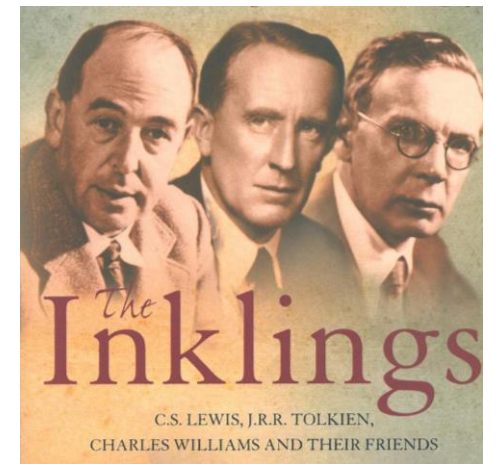
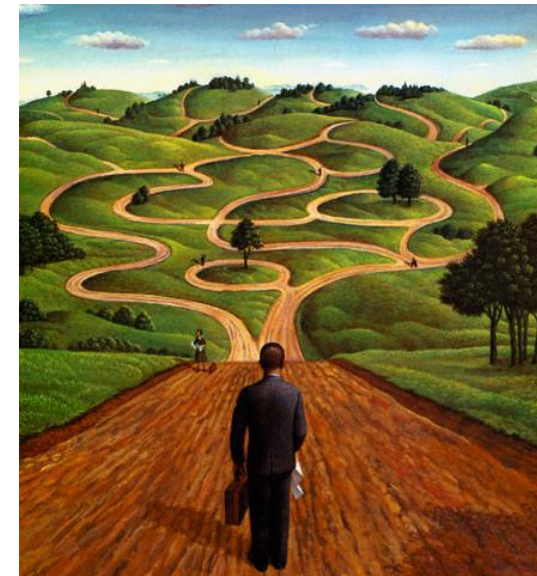


# How Jane Addams Ideas of Peace became part of a US Army War College (Parameters) Publication

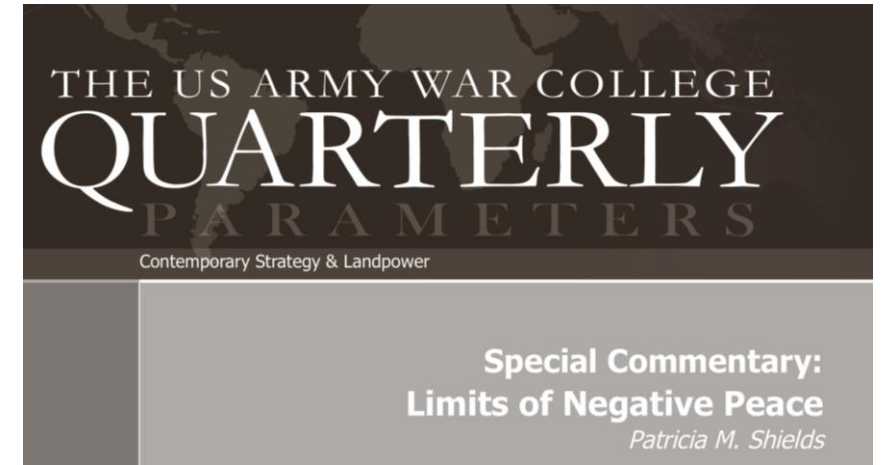
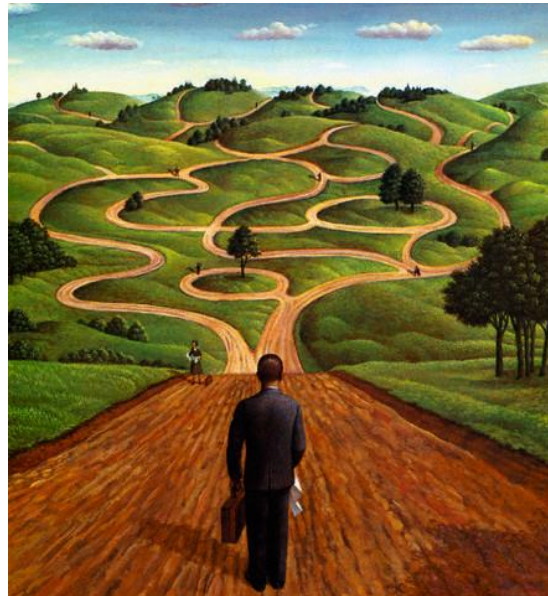
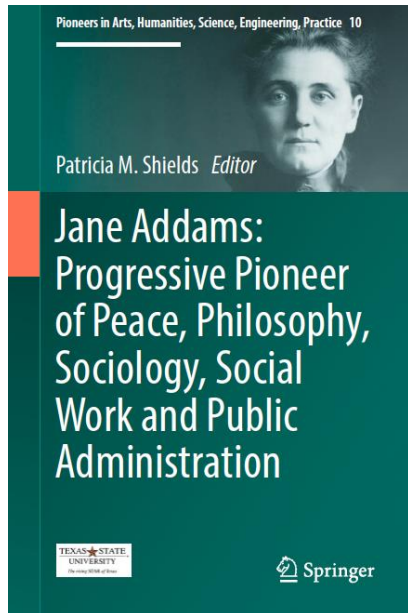


Patricia M. Shields  
Department of Political Science  
Inklings Presentation  
March 27, 2018



An intellectual  
Journey

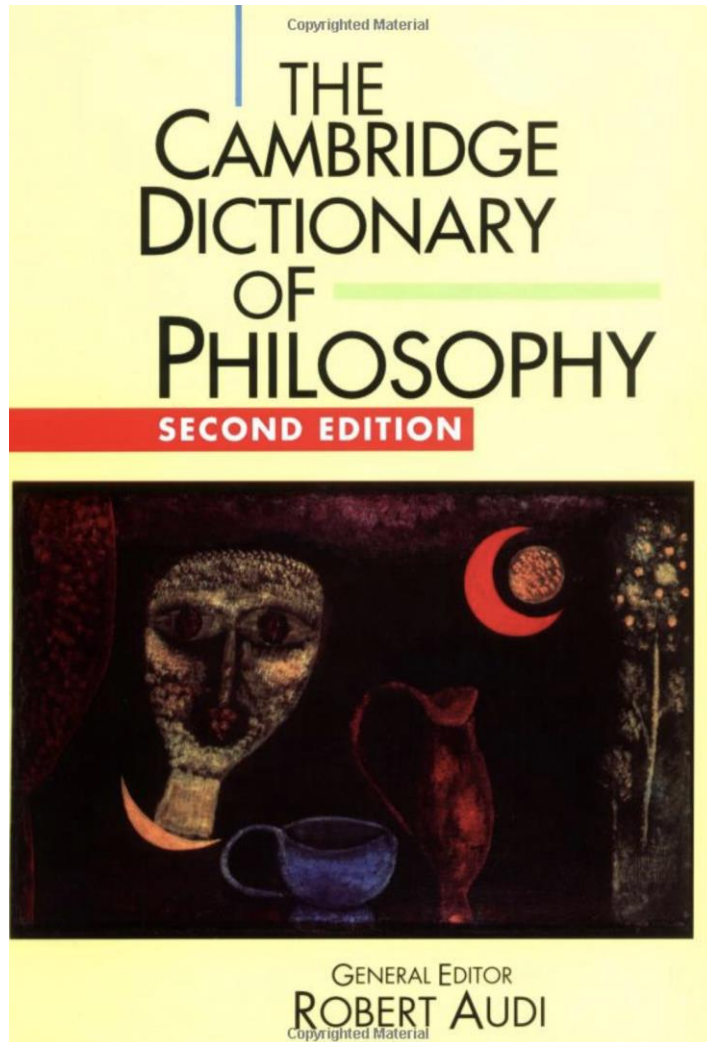
# Story



# Logic of Presentation

1. Library Trip
2. Who is Jane Addams
3. Faculty Development Leave
4. Peace Movement 1890s – 1917
5. Peaceweaving
6. Parameters





Jane Addams

Founders of Pragmatism



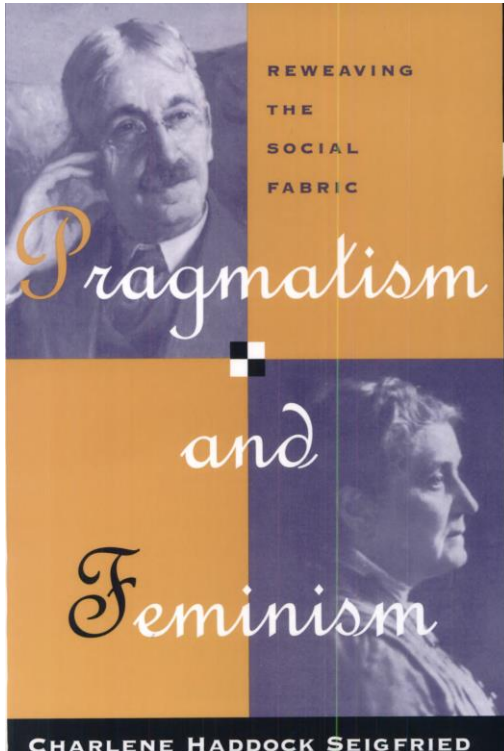
W.E.B. Du Bois



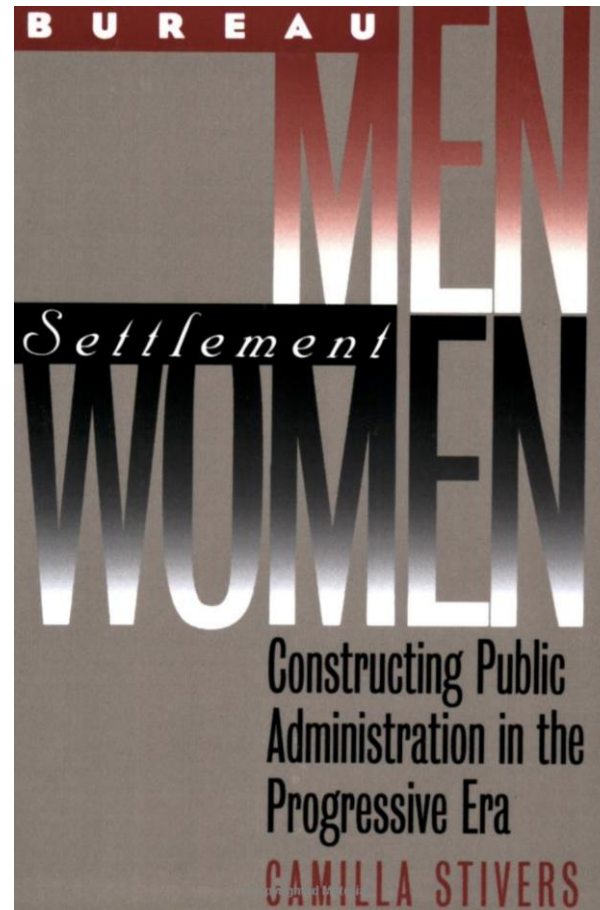


# Recovering Jane Addams

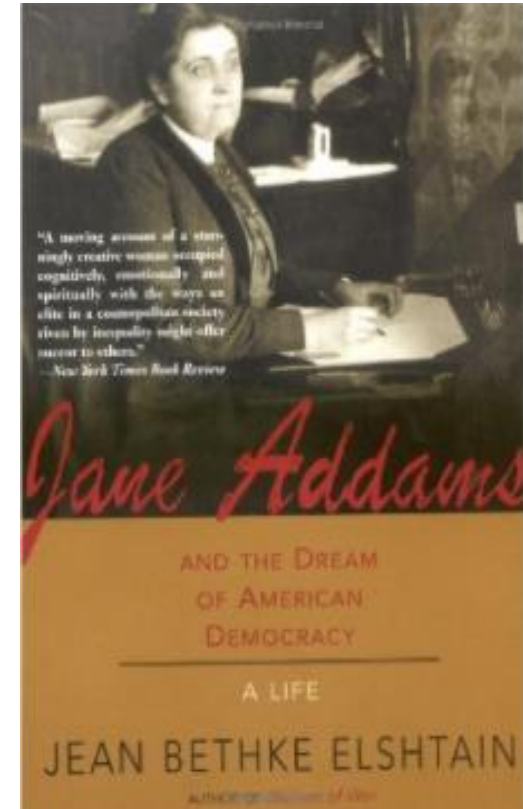
**\*\* Democracy**



Philosophy



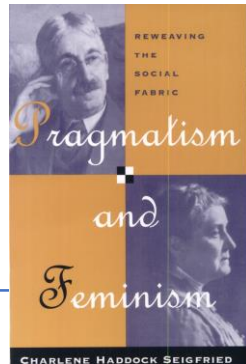
Public Administration



Political Science

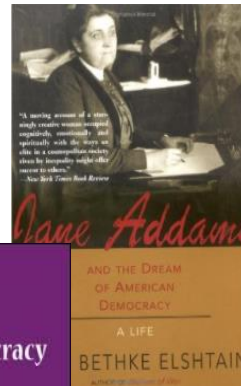
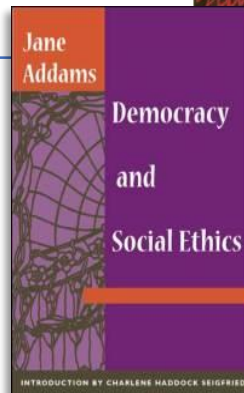
# Pragmatism

## Pragmatism & Feminism



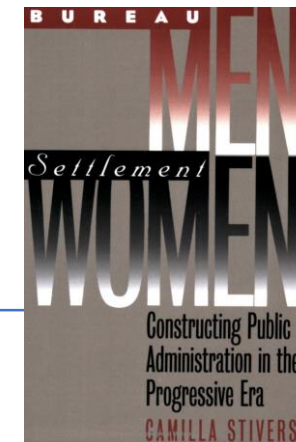
## Democracy

### Elshtain +++ Addams

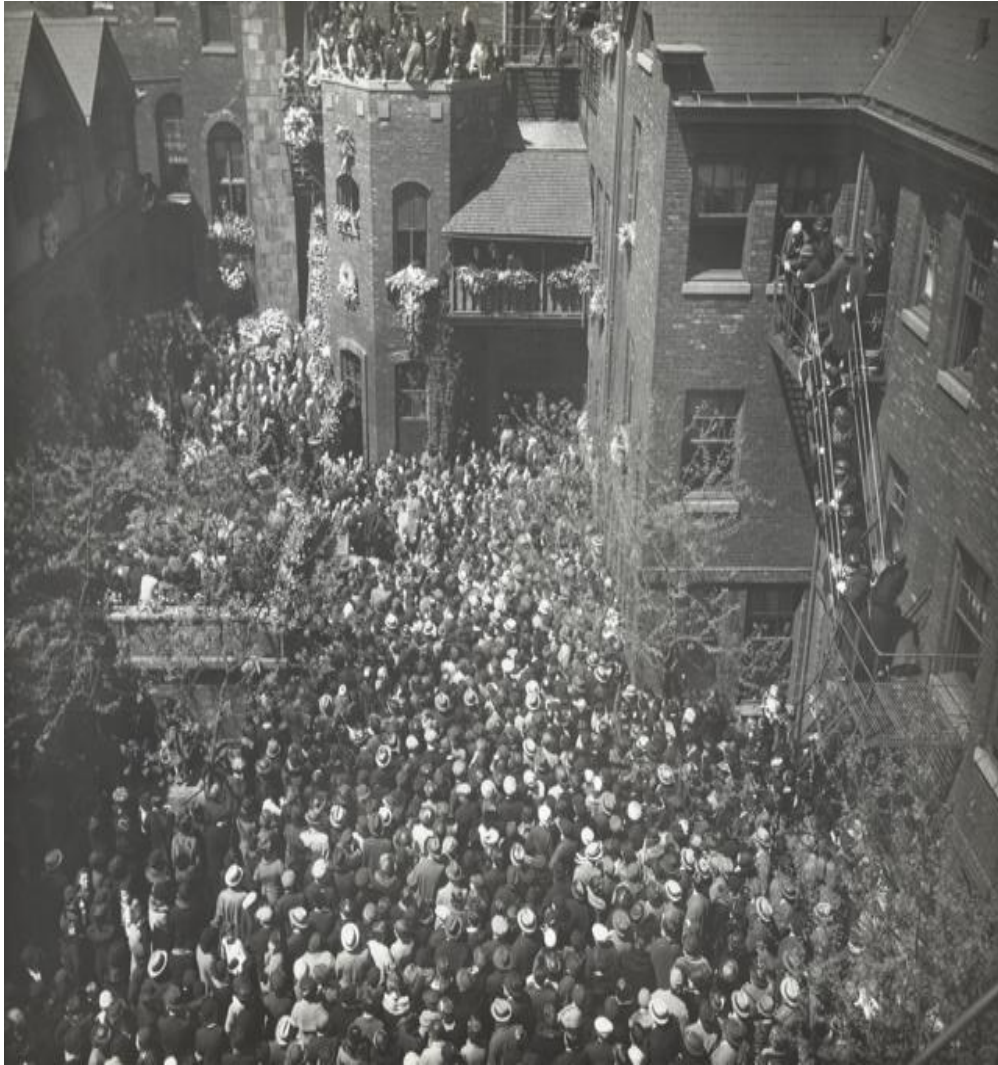


## Public Administration

### Settlement model of PA



# Who is Jane Addams?



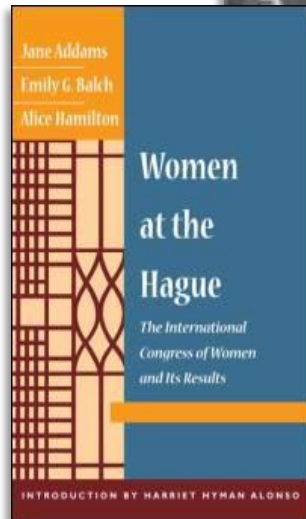
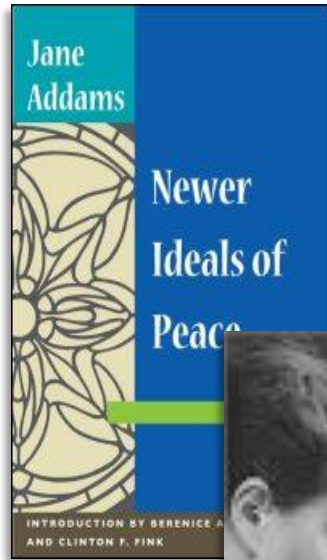
Jane Addams's Funeral  
Steps of Hull House



1860 - 1935





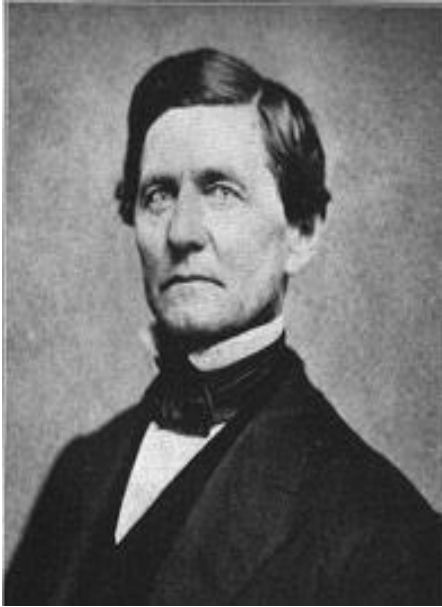


## Nobel Peace Prize 1931



Founder





John Huy Addams  
Father



Sarah Weber Addams  
Mother



Anna Haldeman Addams  
Stepmother



## Rockford Female Seminary

- Valedictorian
- Editor Newspaper
- President Debate Club
- President of Class

# Leader Settlement Movement

1880s – 1920s

Problems of  
Industrialization, Urbanization  
& Immigration

Poverty

Health – Sanitation

Health – Industrial accidents

Education



Inspired by trip to  
England's Toynbee Hall

**Top Down** model of reform

Residential--  
Settlement Workers live and work  
in Community



Immigrant Community  
Lab – conflict resolution

Bottoms up model of reform  
Residents mostly women

## Hull House (Chicago)



Hull House –  
**Settlement Workers** gathering  
1920



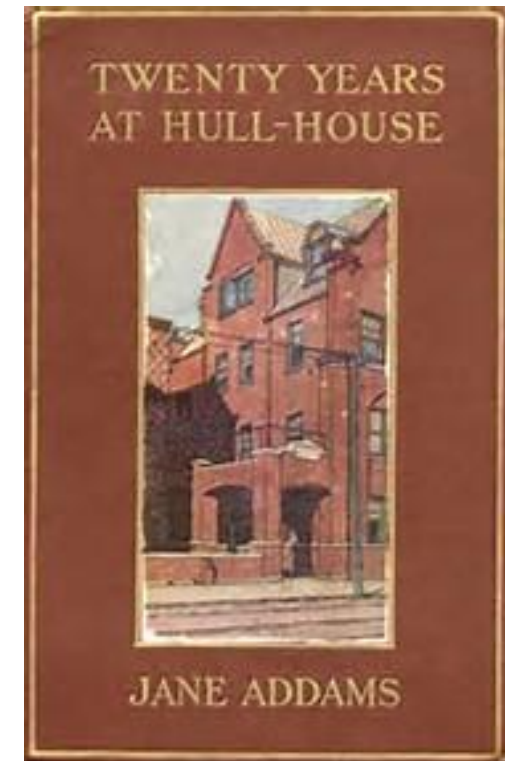
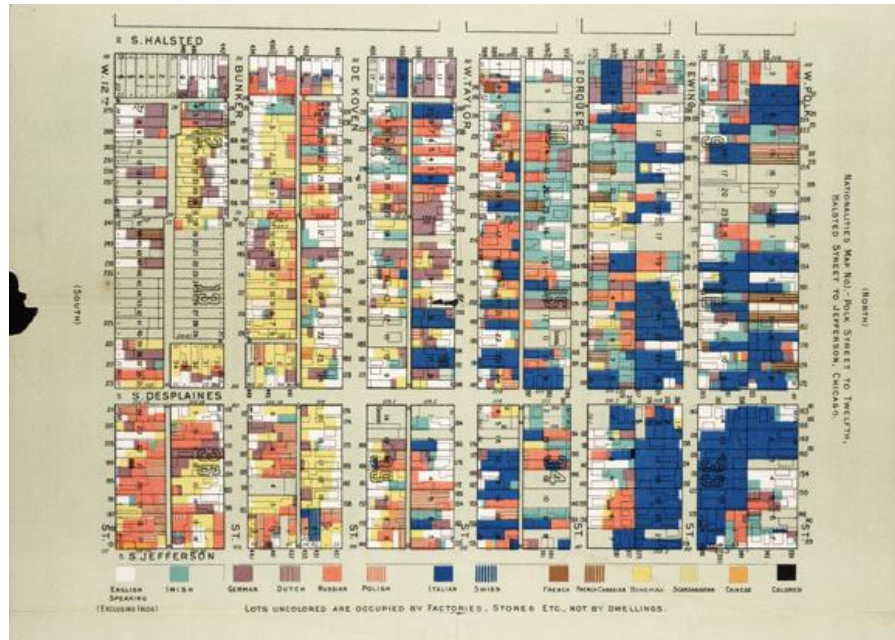


## Hull House Activities

drama classes,  
day care programs,  
coffee house/theater,  
art and labor museum,  
Sunday concerts,  
choir,  
over 25 clubs,  
meeting rooms for organized labor,  
cooperative apartments for young women  
College Extension courses  
Voter Registration  
Speaker series....

**first in Chicago to establish a public**  
bath,  
gymnasium,  
kitchen,  
playground,  
swimming pool.....

“The Settlement, then is an **experimental effort** to aid in the solution of the social and industrial problems which are engendered by modern conditions of life in a great city.” (Addams, 1910, p. 125)



## Active social reform



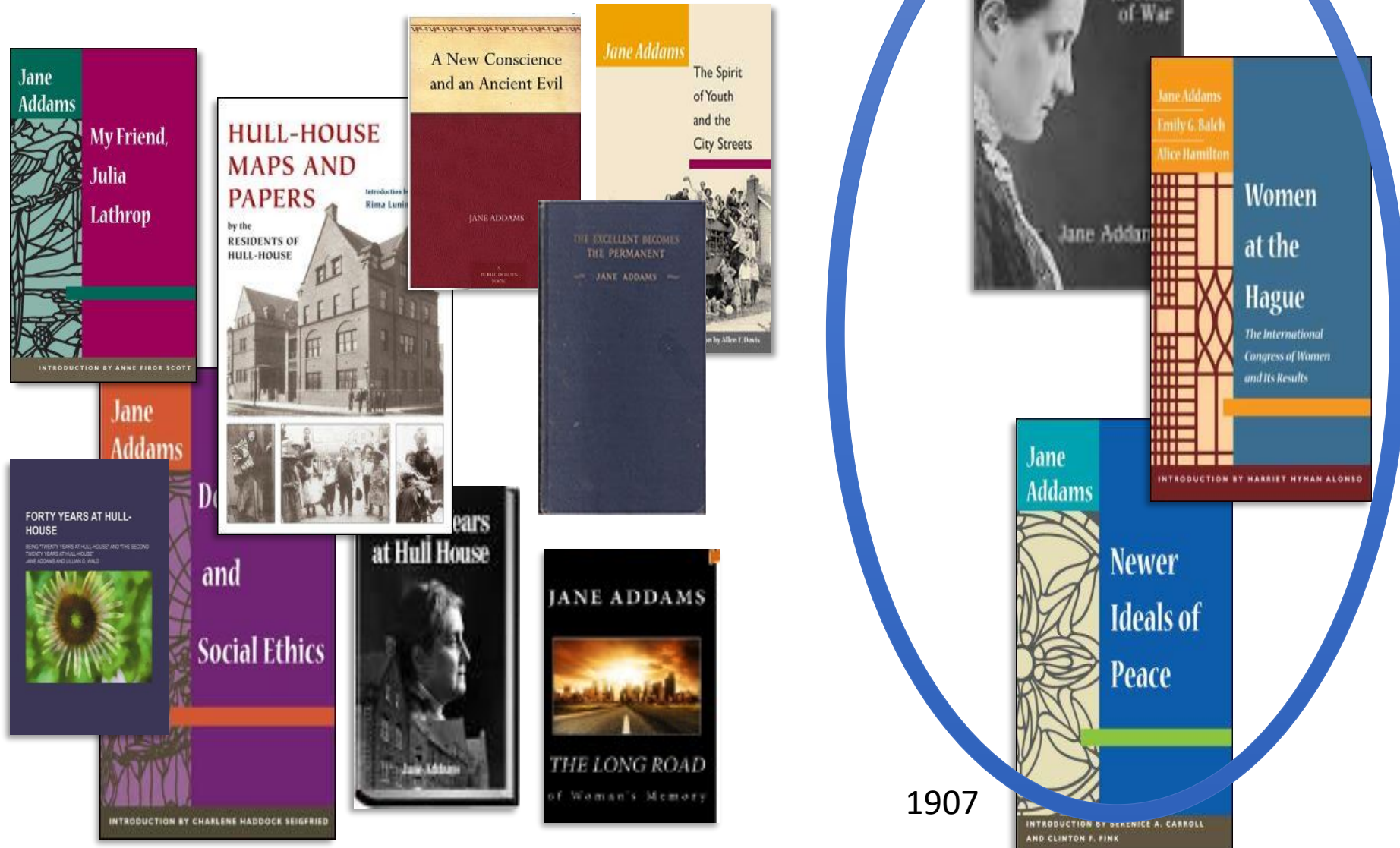
- Street Cleaning/garbage collection
- Water/Sewer
- Healthier workplace

- Child labor laws
- Playgrounds
- Juvenile Courts





## Noted Speaker - Author







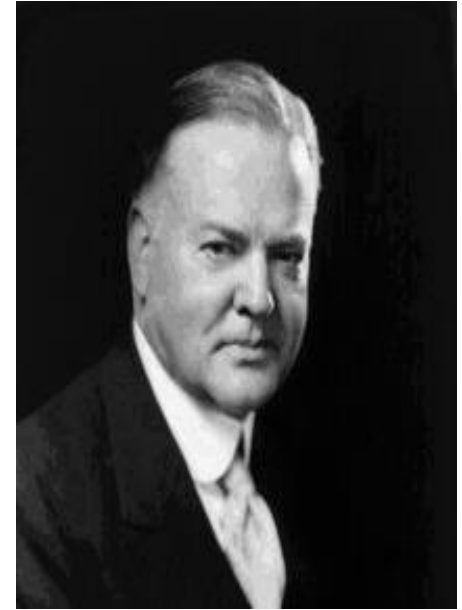
26<sup>th</sup> President

She nominated Progressive party presidential candidate.



28<sup>th</sup> President

Wilson nominated her for Nobel prize



31<sup>st</sup> President

She and Hoover worked on post WWI humanitarian efforts



Founder- Organizer



Civil Rights



Civil Liberties

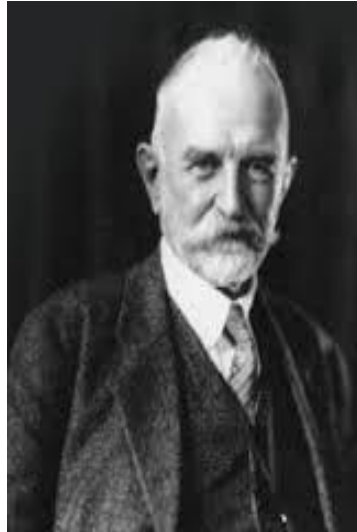
# Founder Classical American Pragmatism



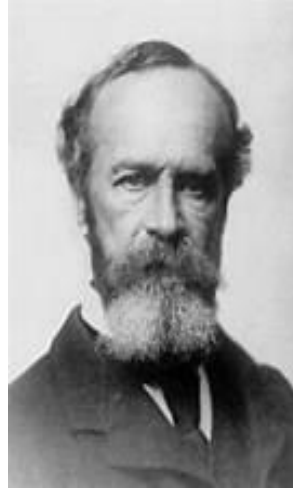
Charles  
Sanders  
Peirce



John Dewey



George Herbert  
Mead



William James



W. E. B. Du Bois



Jane  
Addams

**Feminist Pragmatism**  
**Public Philosopher**

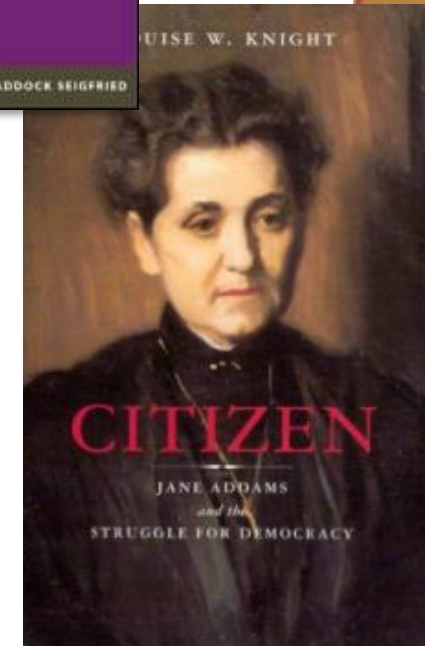
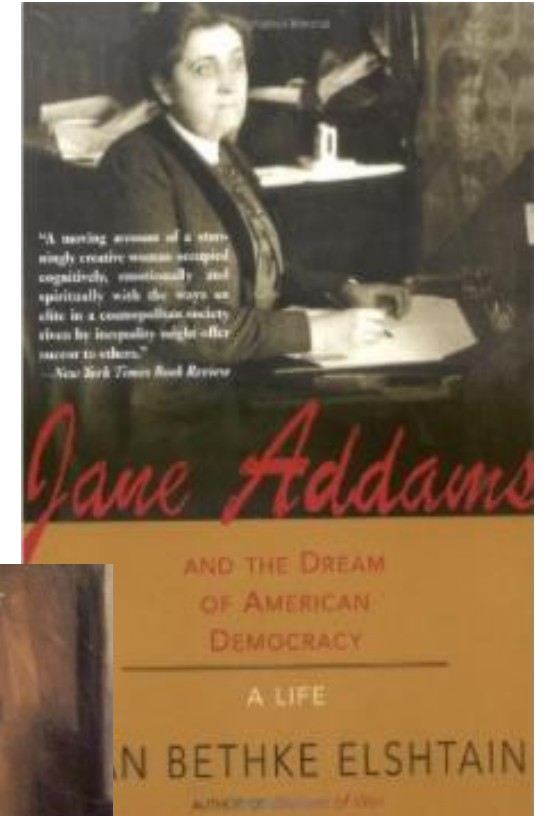
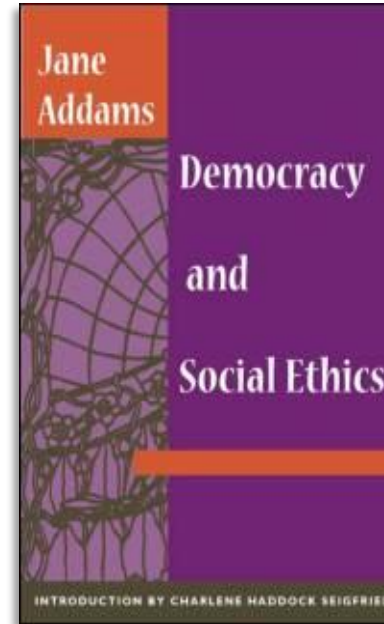
## Recover - Woman of Ideas

# Hull House



Ideas emerged from  
This **feminine experience**  
Feminist Pragmatism

Immigrant Community  
Labor/management disputes  
Lab – conflict resolution



**Democracy /ethics/peace**



# Bottoms up Participatory Democracy

## Community of Inquiry

1. Identify problem
2. Engage community (participatory democracy)
3. Use scientific attitude

Act – see if it works.



Helpful in Conflict resolution --

focus on community problem **not on ideological/ethnic differences**

# Recovering Jane Addams



WWI



Ideas Lost

Peace Activist  
Humanitarian

1889

Celebrated

1915

Demeaned  
Traitor  
Communist  
Silly old woman

DOJ Surveillance

1931



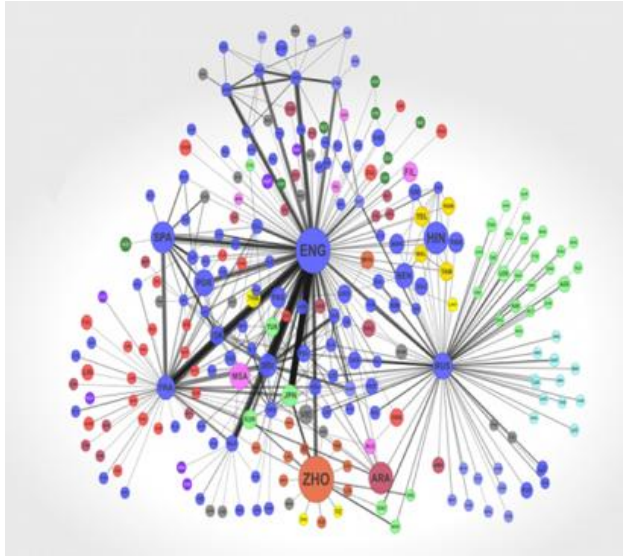
1935



World War I

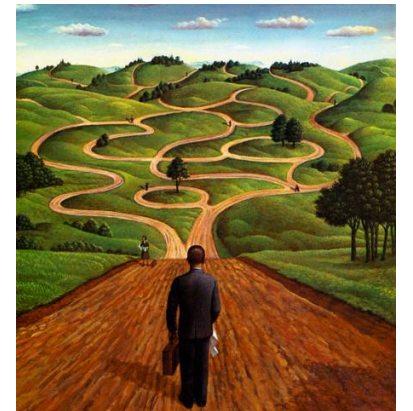
Like an extinction event

## Faculty Development Leave - 2014



Expeditionary mindset/  
Peacekeeping

Pragmatism/  
Public Administration





**Warrior**



**Peacekeeper**



Shields & Soeters, 2013



What Was Jane Addams's concept of Peace?

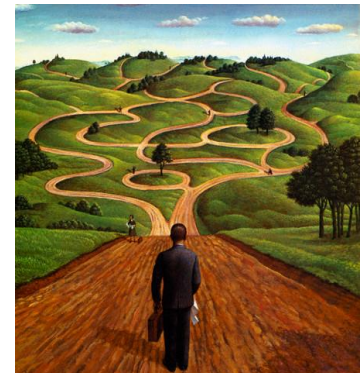
Could it be useful in contemporary peace studies and Peacekeeping?



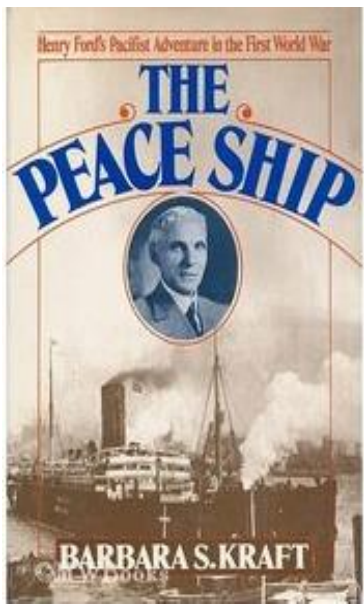


## US Peace Movement (1890s – WWI)

- Establish International “**Law and Order**”
- Arbitration
- US Supreme Court as Model
- Peace Good for Business
- Christian Values
- Women’s social policy agenda







Peace Organizations (Elite)  
Social conservative  
National political figures  
Important Businessmen

Ford



Roosevelt



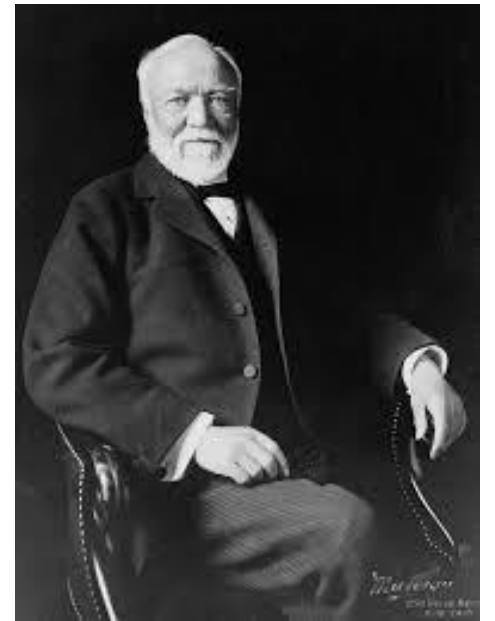
Wilson



Addams



Taft



Carnegie



# International Peace Conference

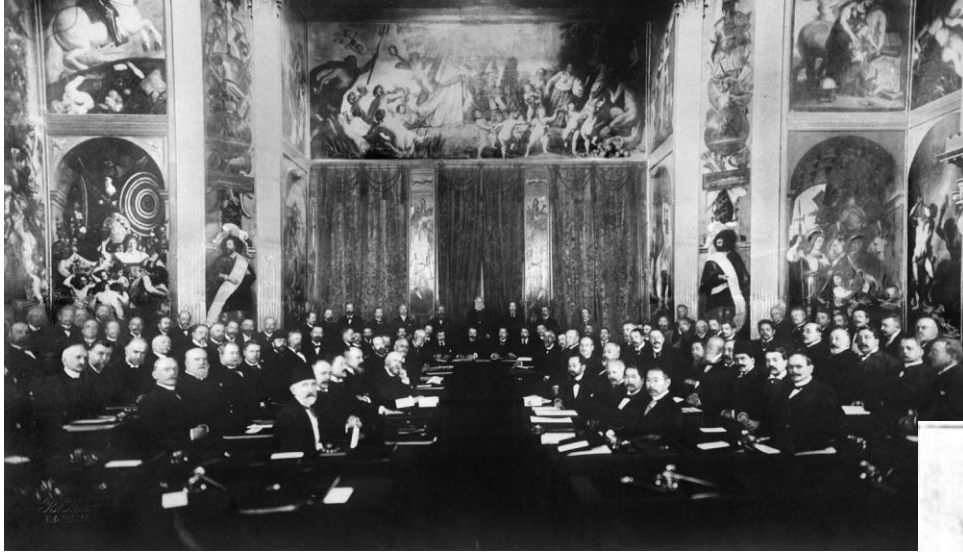


The Hague 1899 & 1907

World leaders actively sought new institutions, legal frameworks and policy tools

- Permanent Court of Arbitration
- 1<sup>st</sup> formal statement laws of war, war crimes

War replaced by a system for the peaceful settlement of disputes among states.



The Hague  
1899 & 1907

PROCEEDINGS  
OF  
**THE TEXAS PEACE CONGRESS**  
HELD AT  
**BAYLOR UNIVERSITY**  
WACO, TEXAS  
November 19-21, 1907



Partial view of Baylor University Campus, where the Peace Congress was held



# Women' Peace Movement

- Maternalist

- Women have an instinctive and rational opposition to war
- Women & Children suffer but not at table
- Need increase participation of women in politics.
- Linked to Suffrage Movement



Against U.S. entering  
World War I

Aug. 1914



Women's Peace March





International Peace Congress of Women at the Hague  
April 1915



1915



- Women's Peace Conference  
The Hague
- Delegation visited capitals warring  
Nations -- Mediation

INTERNATIONAL CONGRESS OF WOMEN

THE HAGUE — APRIL 28<sup>TH</sup> TO MAY 1<sup>ST</sup> 1915

---

14

RESOLUTIONS ADOPTED

- Organization “Society of Nations”
- **Acknowledge women’s suffering during war**
- **Give women right to vote**
- **Women participation in Peace Processes**





## Speech Carnegie Hall







During WWI



# During & After WWI

## US Food Administration

Addams traveled  
across US

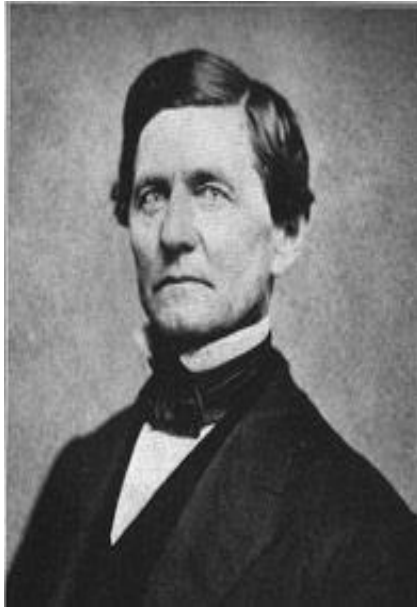


Post War  
disaster relief

4 million tons of  
supplies  
23 countries

Herbert Hoover

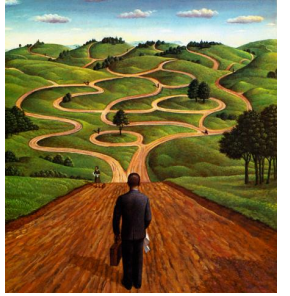
# Paternalism



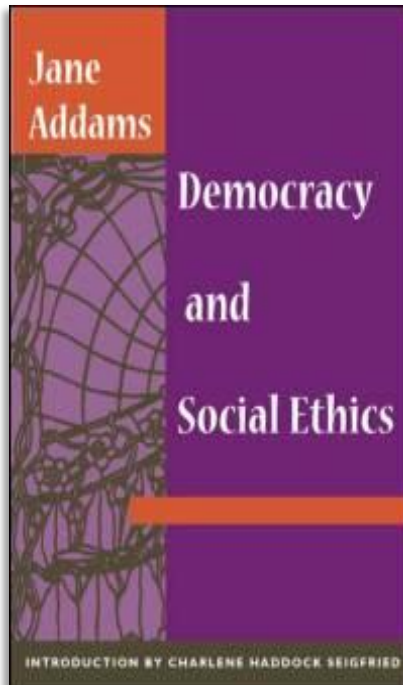
Man of integrity



Duty  
Moral Absolutism



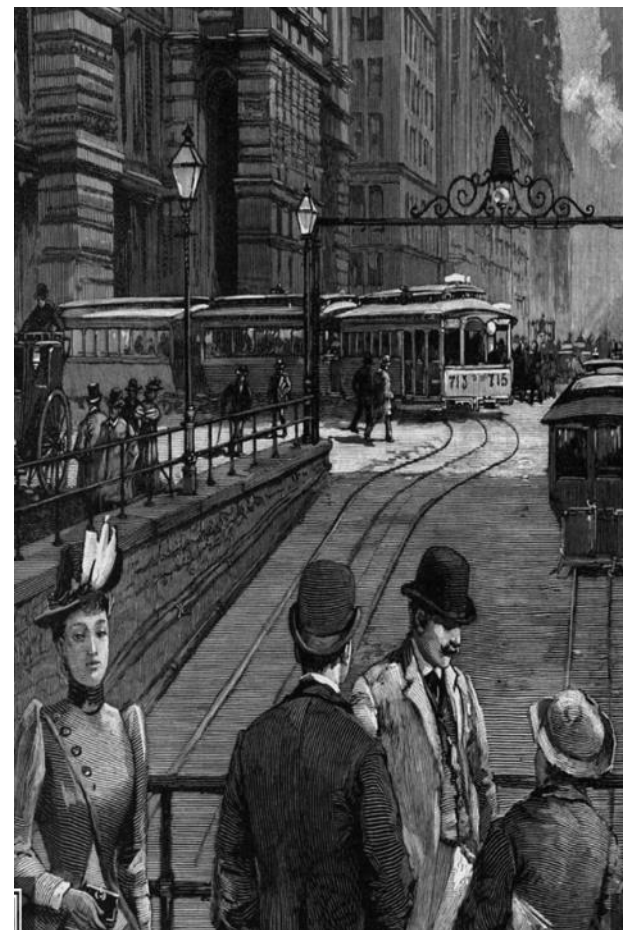
# Social Claim



Tension between the individual and social claim.





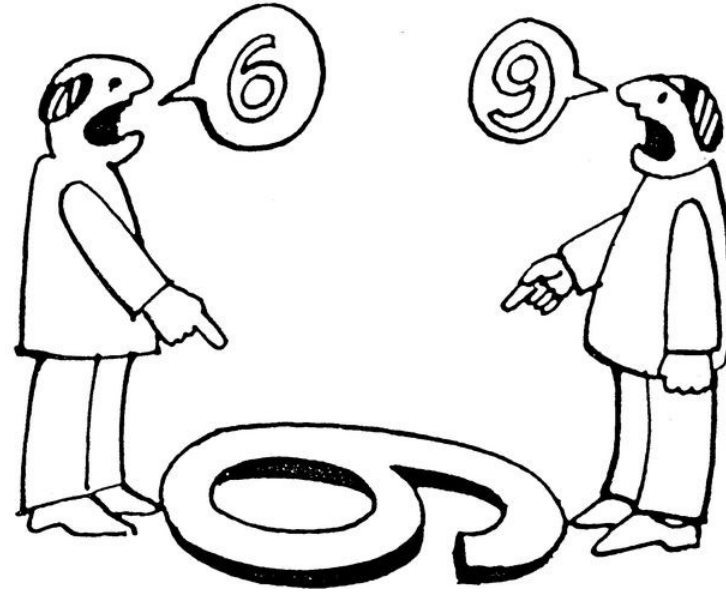


# Social Claim Generated Conflict

(broken relationship)

## Conflict Reinforced

Rigid Moralisms



## Conflict Mitigated

Sympathetic Understanding

Perplexity

Working on common problems



# Model of Municipal Government

Valued soldiers  
Devalued Children

Criticized outmoded model  
of city governance



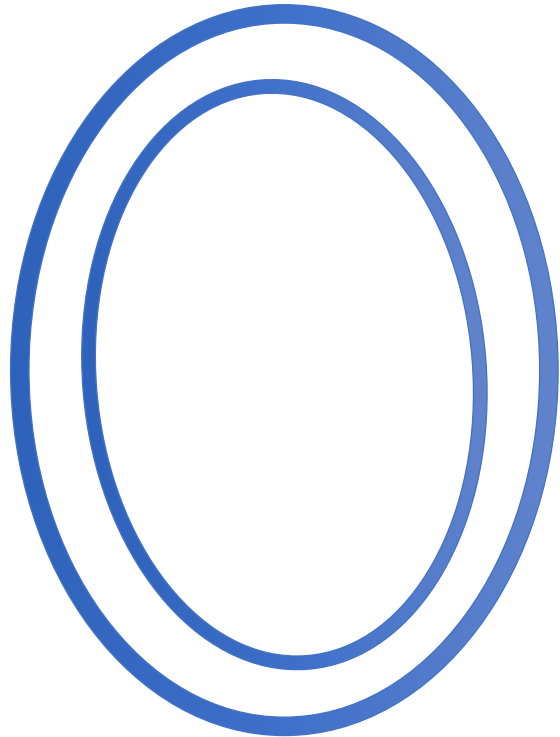
City as Citadel



# Municipal Housekeeping

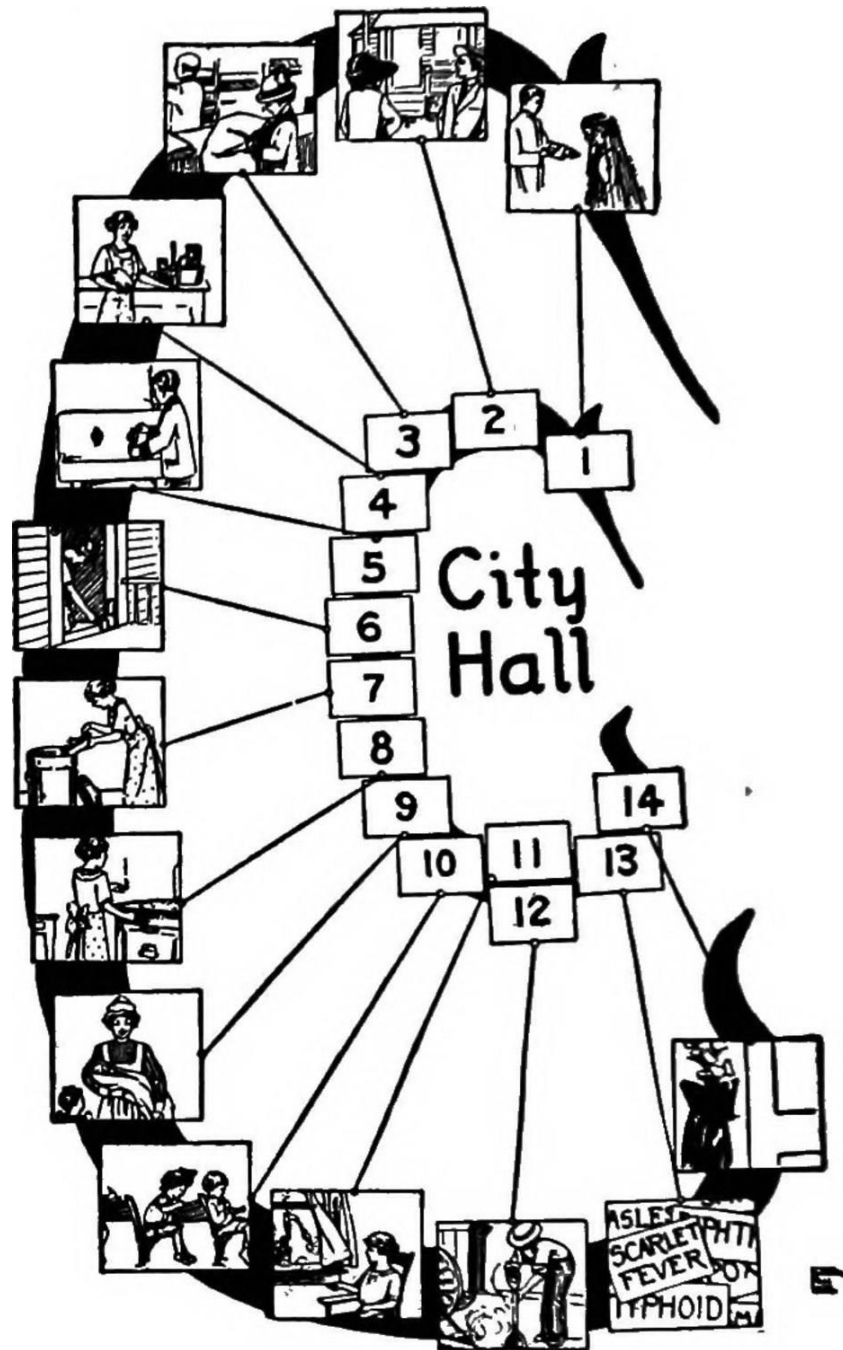
Take women's skills into a new sphere

Embrace and expand social claim



Argued in favor of a more caring model of city government.

Women's  
experience



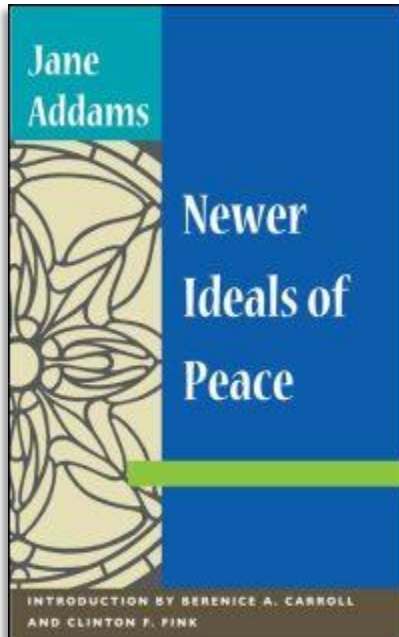
Clean Streets  
Clean Water  
Safe Meat/Food  
Safe Clothing  
Care for children  
Literature -libraries

# Civic Housekeeping

1907 “Survival of Militarism in City Government” (chapter 1)

“Failure to Utilize Immigrants in City Government

“Utilization of Women in City Government”



Social claim linked to Women's Experience

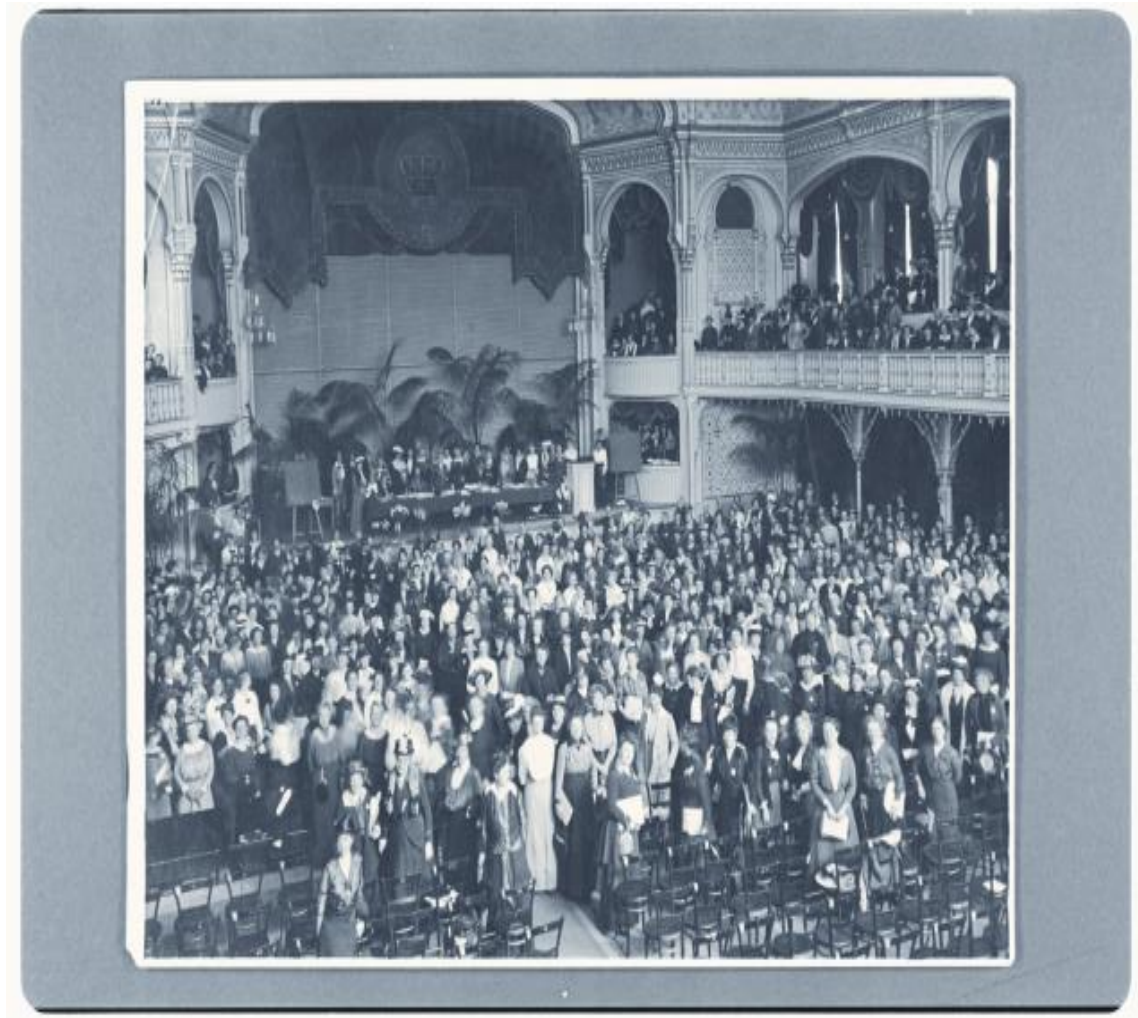
Natural Leader of Women's Peace Movement

# Social Claim

Widened - world



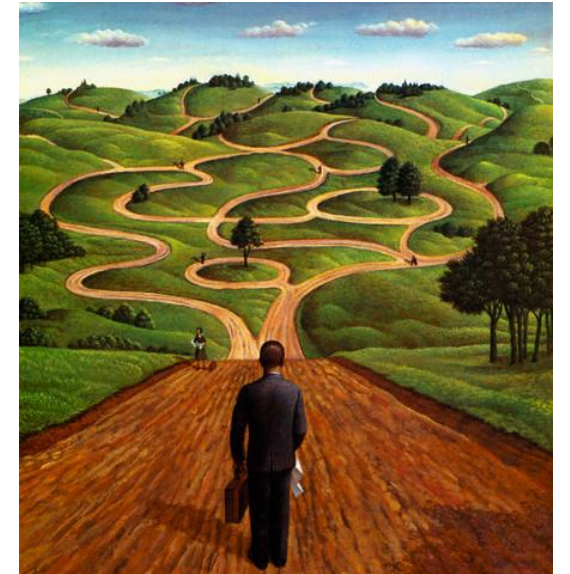
April 1915



International Peace Congress of Women at the Hague



Where do Addams ideas fit in the larger Peace literature?





“Peace Research:  
Just the Study of War”\*

Negative Definition of Peace

\* Gleditsch, N. Nordkvelle, J & Strand, H. (2014)

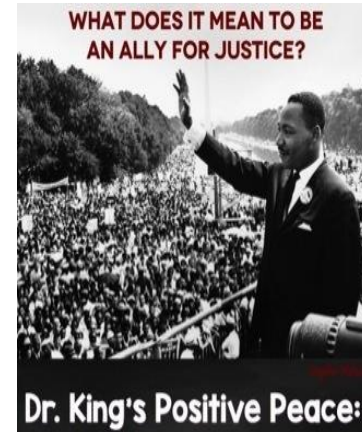
# Problems with Negative Definition



1. Shifts focus from peace to violence.
2. Focuses on a short run end state.
3. Divorced from the dynamics of relationships.
4. Shifts attention away from underlying causes of violent conflict.

# Positive Peace

- Nonviolent and creative conflict transformation.
- Uneven long run focus.
- The fabric of the kind of society to which we aspire.
- Integrity, wholeness and well-being that arise from justice.
- Humanity toward others.
- Openness to a widely conceived social claim.







Feminine sensibility

# PeaceWeaving

## 1. Relationships

## 2. Avoid Rigid Moralisms



Friend/enemy  
good/evil

Courage

### 3. Sympathetic Understanding



- How build relationship
- Perplexity

## 4. Community of Inquiry

1. Practical Problems
2. Scientific Attitude
3. Participatory Democracy





## 5. Lateral Progress



Justice



Duty toward the less fortunate – Social claim

# PeaceWeaving

– building the fabric of peace by emphasizing relationships. These positive relationships are built by working on practical problems, engaging people widely with sympathetic understanding while recognizing that progress is measure by the welfare of the vulnerable. (Shields & Soeters, 2015)

True *peace* is not merely the absence of tension:  
It is the *presence of justice*

Without *justice* there can be no *peace*.

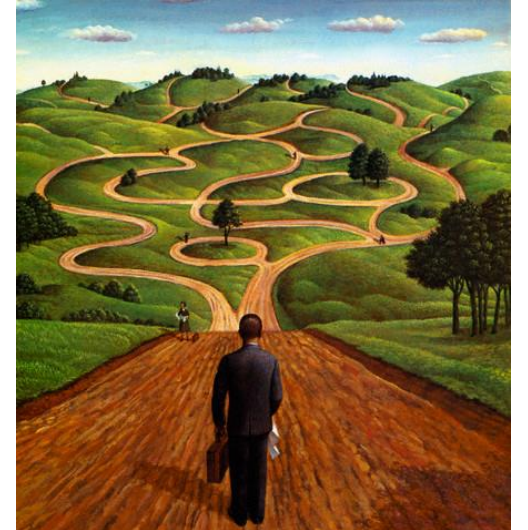
Martin Luther King, Jr.



Both peace and justice are a process --  
Jane Addams offers insights into these processes

# Does Public Administration have a concept of Peace?

Could positive peace be a useful concept for public administration? For Policing?



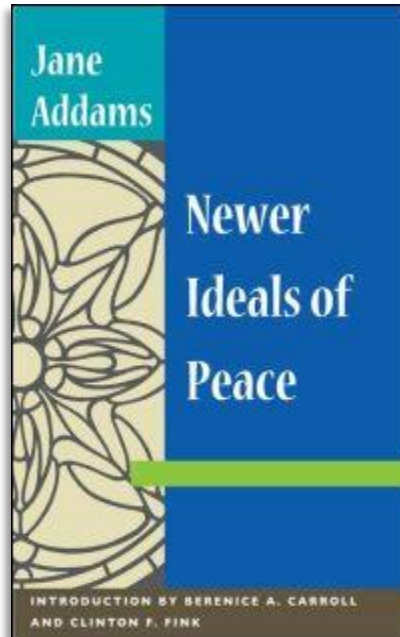


# Civic Housekeeping

1907 “Survival of Militarism in City Government” (chapter 1)

“Failure to Utilize Immigrants in City Government

“Utilization of Women in City Government”



Social claim linked to Women's Experience

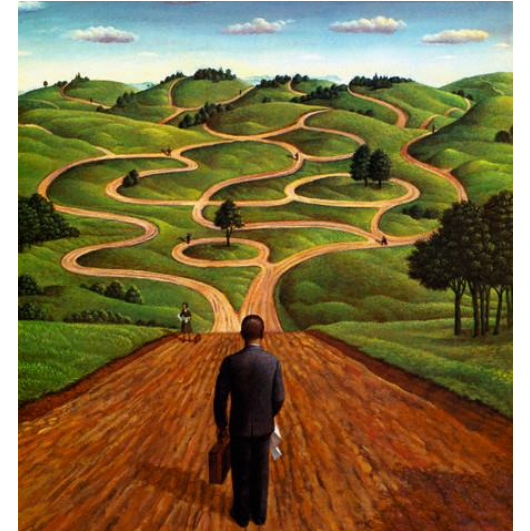


Chapter in book -- retirement

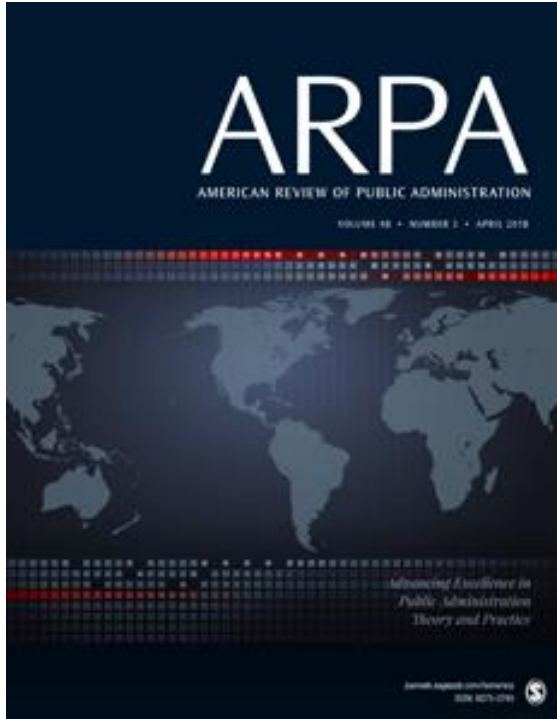
Title of book – Ambidexterity: Resolving  
Conflicts in Military Organizations

Write Chapter One – “Ambidexterity”

Defined Ambidexterity and showed underlying  
Pragmatism in his work.

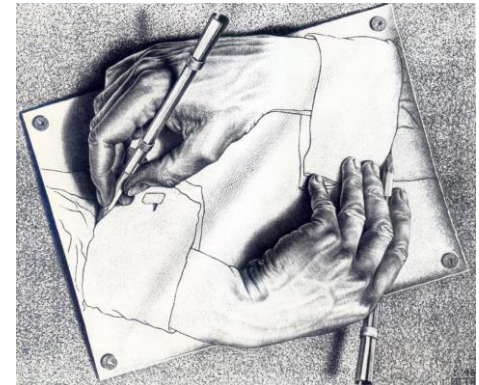


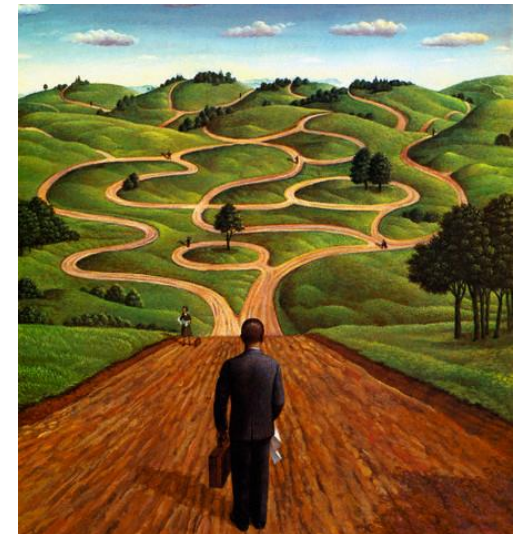
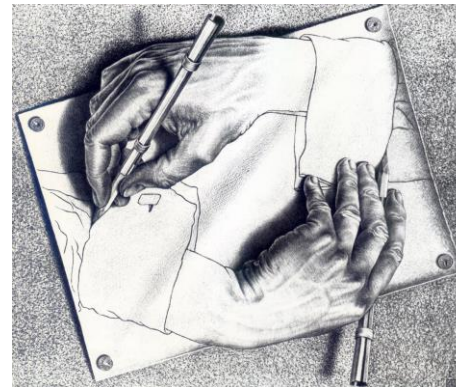
# “Peaceweaving, Jane Addams, Positive Peace and Public Administration”

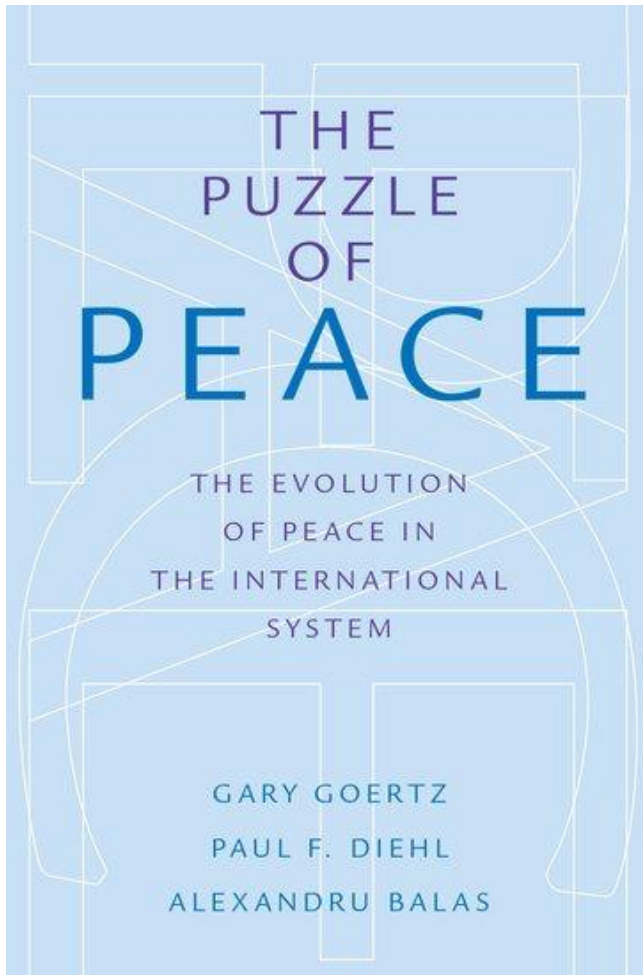


Ambidexterity – incorporate both negative and positive peace into policy

Shields & Soeters, 2017







## Identified Problems with Negative Peace Dominance in International Relations

Short run time horizon  
Ignores relationships  
Absurdities



# THE US ARMY WAR COLLEGE QUARTERLY PARAMETERS

**Secretary of the Army**

Dr. Mark T. Esper

**Chief of Staff of the Army**

General Mark A. Milley

**Commandant**

Major General John S. Kem

**Editor**

Dr. Antulio J. Echevarria II

**Managing Editor**

Ms. Nora Ellis

**Assistant Editor**

Ms. Melanie Adams

---

**Contributing Editors**

---

Dr. Tami Davis Biddle  
US Army War College, DNSS

Dr. Jacqueline N. Deal  
Long Term Strategy Group, LLC

Prof. Patrick Porter  
University of Exeter

Dr. Hal Brands  
Johns Hopkins University

Dr. Steven K. Metz  
US Army War College, SSI

Dr. Patricia M. Shields  
Texas State University

---

**Editorial Board Members**

---

Dr. Hal Brands  
Johns Hopkins University

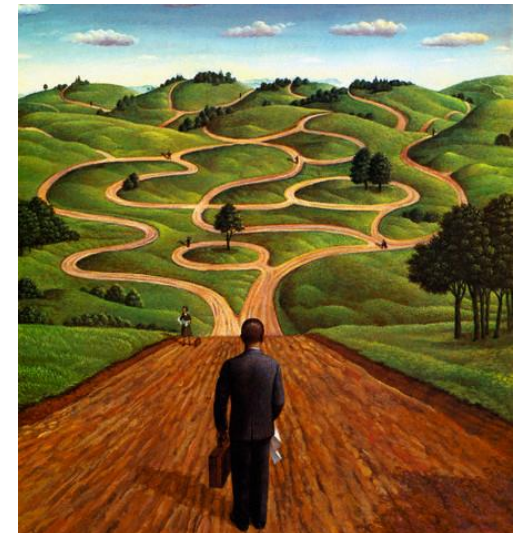
Dr. Stéfanie von Hlatky  
Queen's University, Centre for  
International Defence Policy

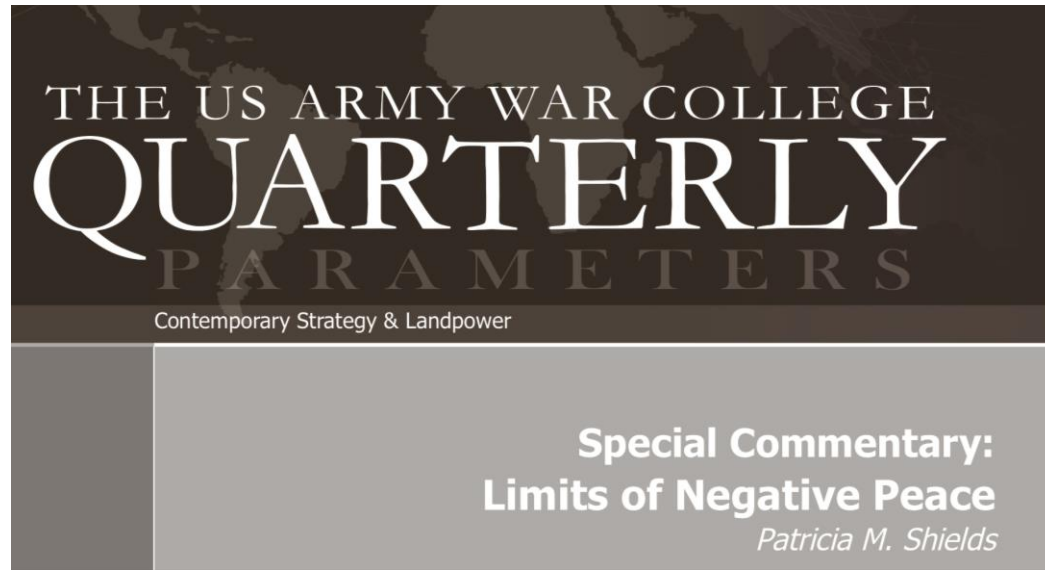
Dr. Nadia Schadow  
Smith Richardson Foundation

Dr. Robert J. Bunker  
US Army War College, SSI

Dr. An Jacobs

Dr. Sibylle Scheipers  
University of St. Andrews





## Limits of Negative Peace, Faces of Positive Peace

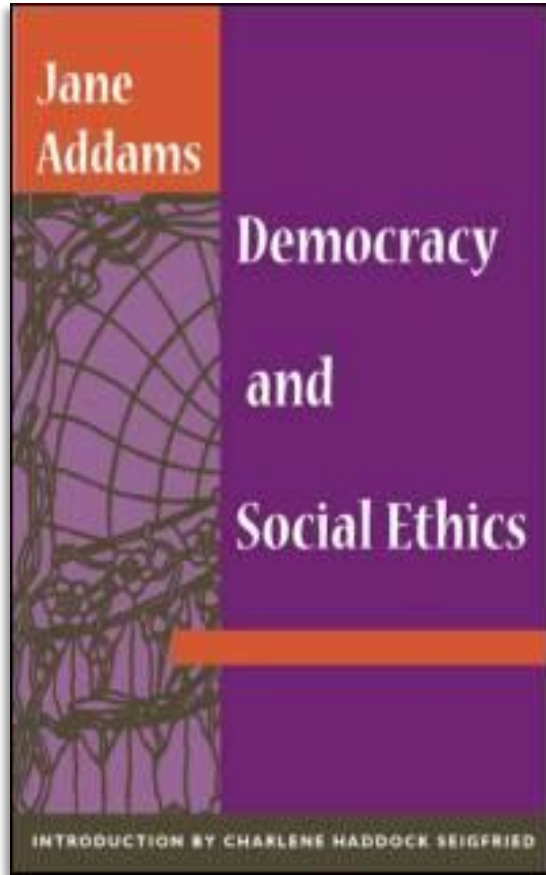
Argued that Army should re-conceptualize its strategic concept of peace  
Recognize problems with reliance on Negative Peace  
Consider the complexities of positive peace – including ideas of Jane Addams.





# Addams Ethics

## Basic Tenets



1. Social Claim
2. Tension between individual and social claims
3. Perplexity
4. Problem of rigid moralisms
5. Need sympathetic understanding
6. Critical Optimism
7. Evolutionary ethics – each generation new set of ethical challenges

1902



# International Committee of Women for Permanent Peace

Becomes



## UN Resolution 1325 on Women, Peace and Security

Increased participation of women in decision making related to, prevention, management and resolution of armed combat.