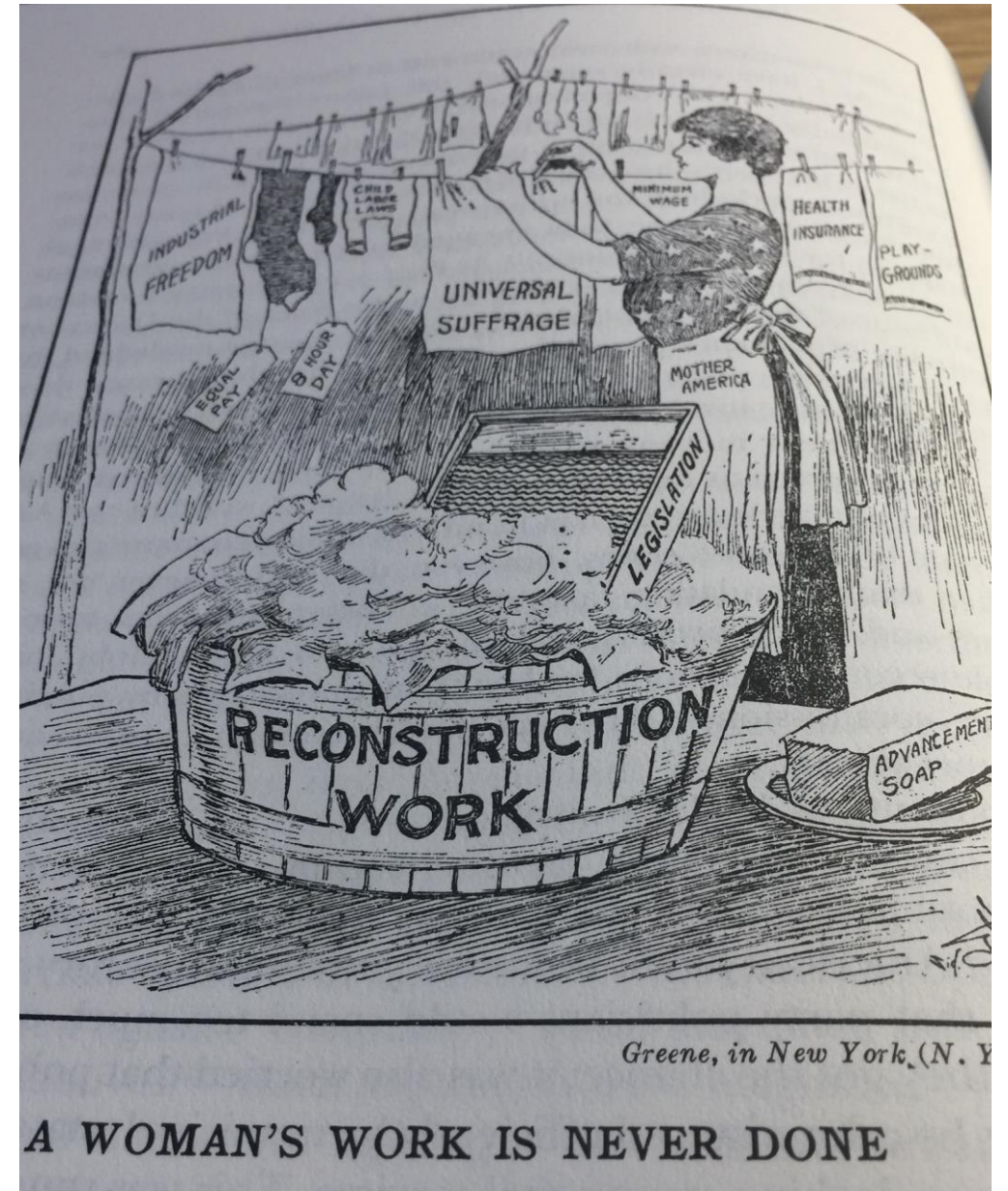
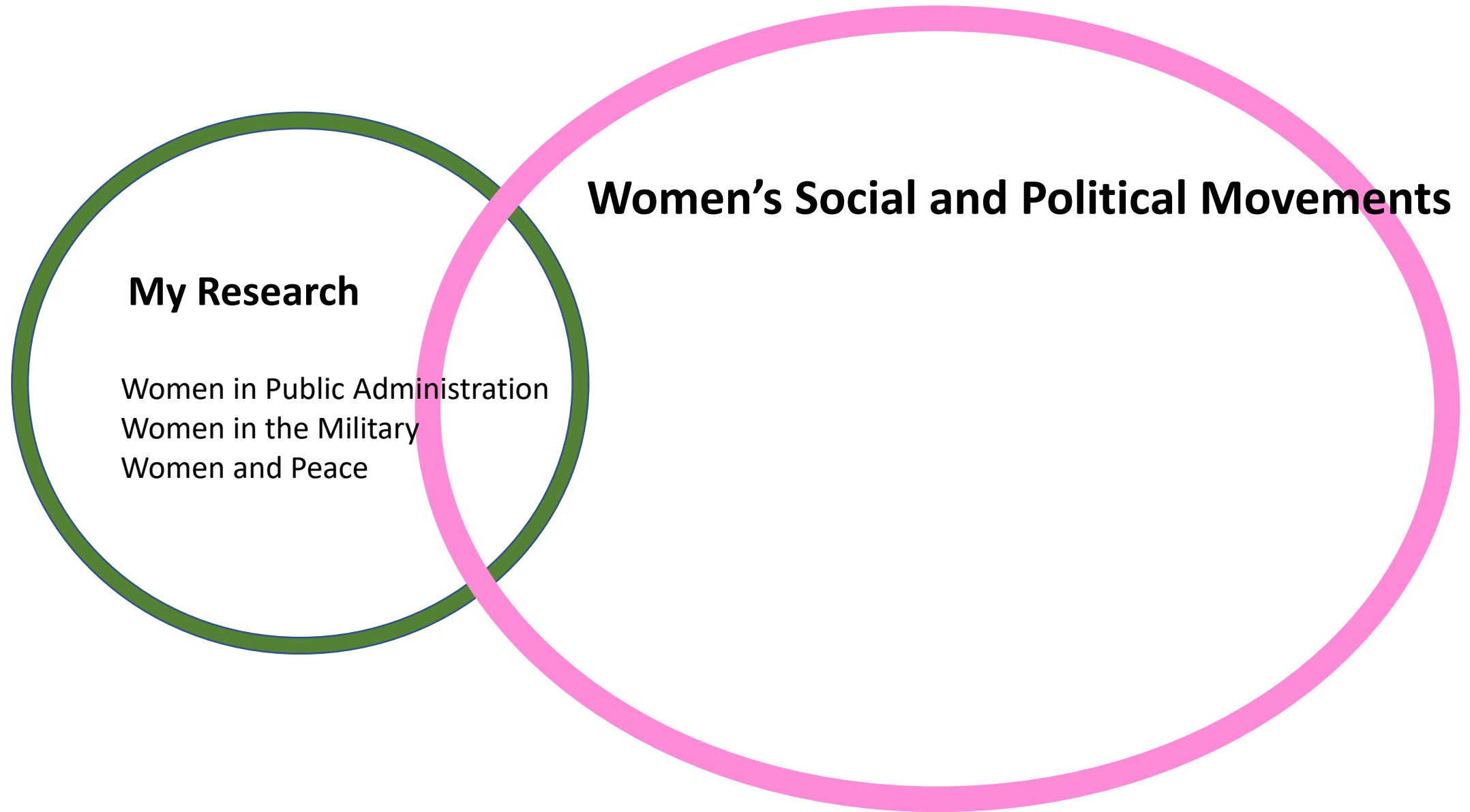


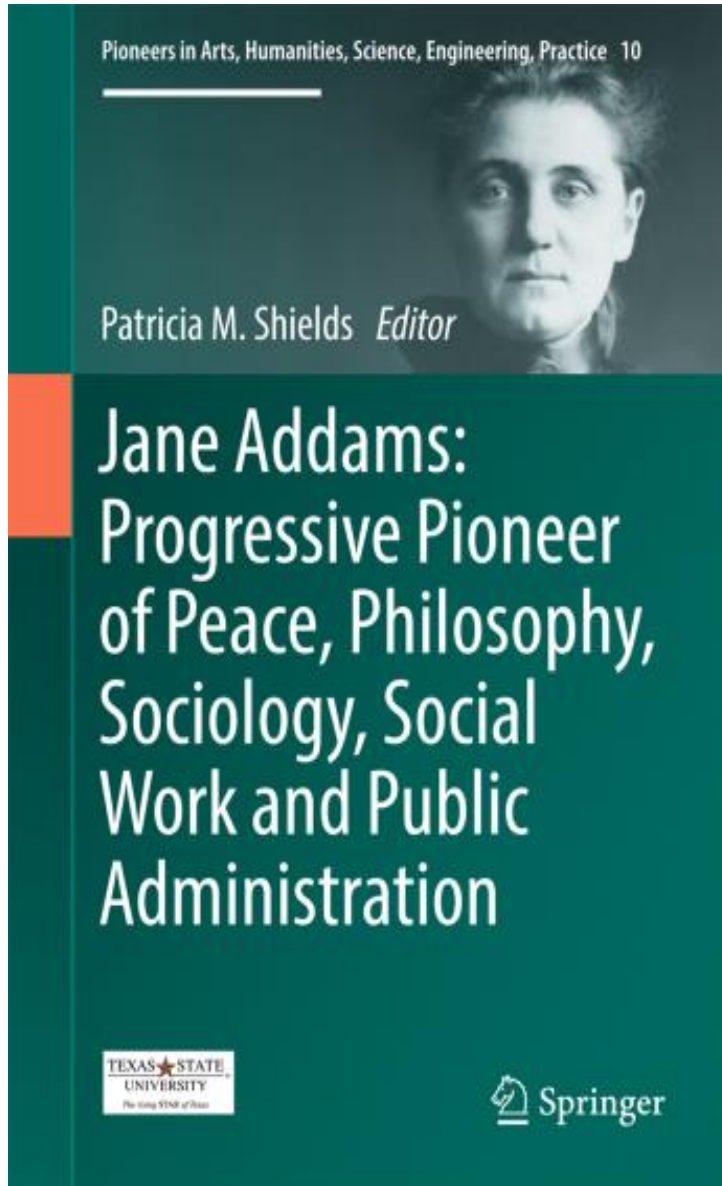
# History of Women's Reform Movements

Patricia M. Shields, PhD  
Professor, Political Science  
Texas State University  
ps07@txstate.edu

Presented for  
PS 4324 Women in Politics  
Professor Jennifer Lamm  
January 31, 2019







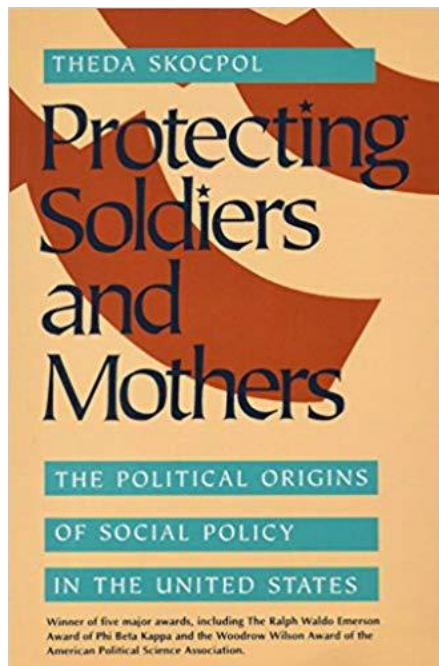
## Jane Addams 1860-1935

- Founder Settlement Movement (US)
- Leader Suffrage Movement
- Founder of Women's Peace Movement
- Founder of Social Work
- Intellectual Leader Social Reform Movement
- Active in Temperance Movement
- Active in Criminal Justice Reform

# Key Women's Social Movements 1800 – 1920's

- Ladies Aid Societies (provided underlying network).
- Abolitionist Movement (1800 – 1865)
- Suffrage Movement (1848 – 1920)
- Women's Christian Temperance Movement (1874-1960)
- Settlement Movement (1880 – 1920...1970s)
- Federated Clubs (1892 – 1911) All states
- Women's Peace Movement (1890s -1918)

Gender relations and identities were not just a footnote....  
They were centrally intertwined with the  
structural and cultural patterns of American Politics from  
The 19<sup>th</sup> to the early 20<sup>th</sup> century.



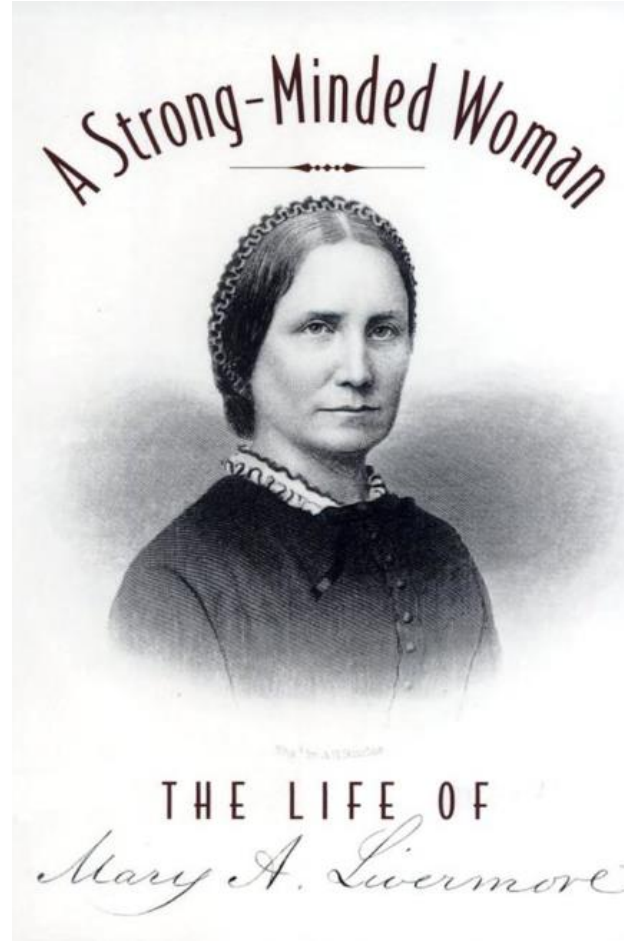
Theda Skocpol  
*Protecting Soldiers and Mothers:  
The Political Origins of Social  
Policy in the US.* 1992



## Stories of Three Women



Florence  
Nightingale



Mary Livermore



Jane Addams

Her mission - use  
science to reduce  
suffering and save  
lives.



1820 – 1910

**Genius**

Reform & Faith

Diseases

Hospitals — need basic hygiene

Nursing





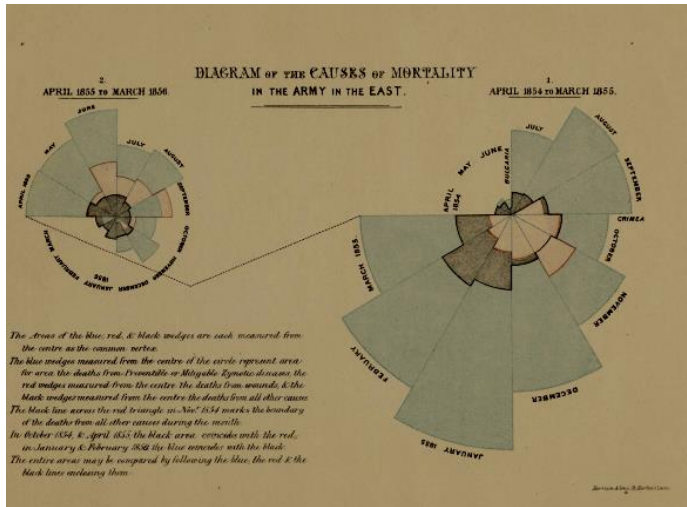
Crimean War  
1853 – 1856

Death by Disease – telegraph

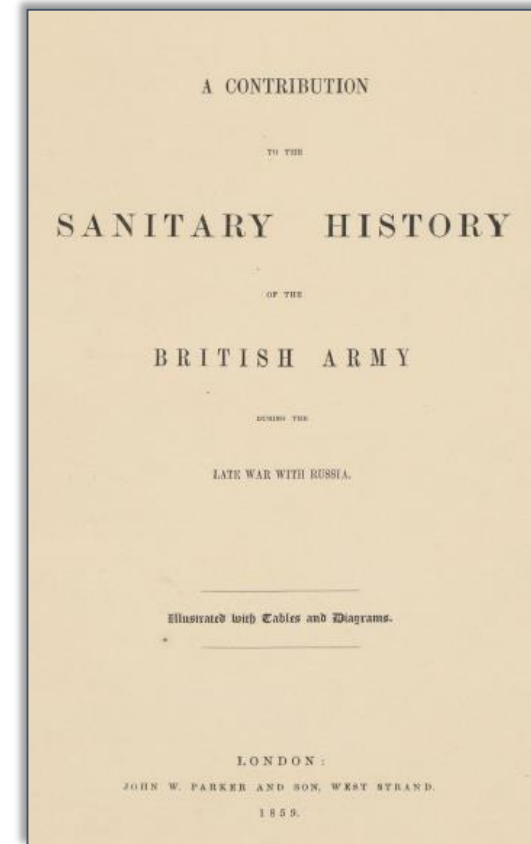


*In the long wars the real arbiter of the destiny of Nations is not the sword, but pestilence* (Nightingale, 1863, p. 3)





Access to upper class  
Secretary of War



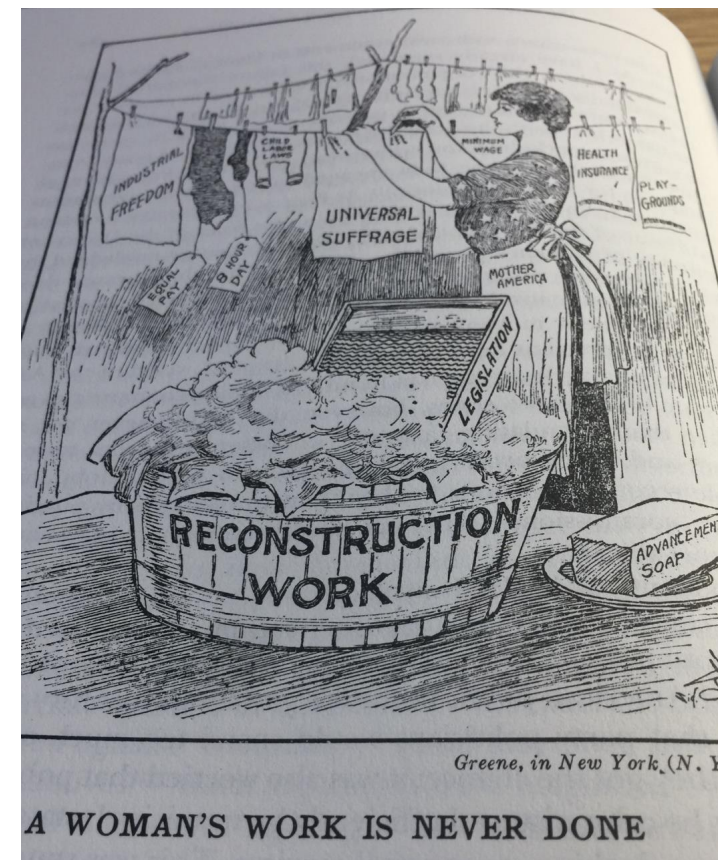
Rose Diagrams

- Overcrowding
- Lack of cleanliness
- Drainage
- Ventilation

British Sanitary Commission

Hospital in Scutari

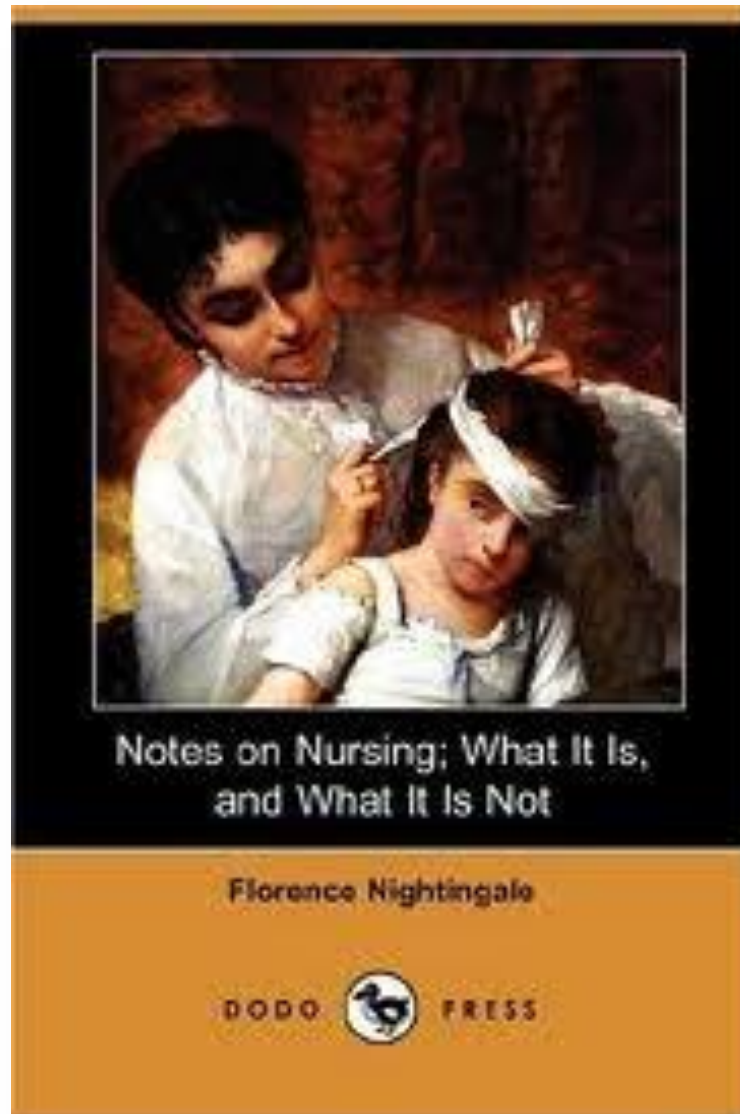
Report led to changes in Care of Soldiers



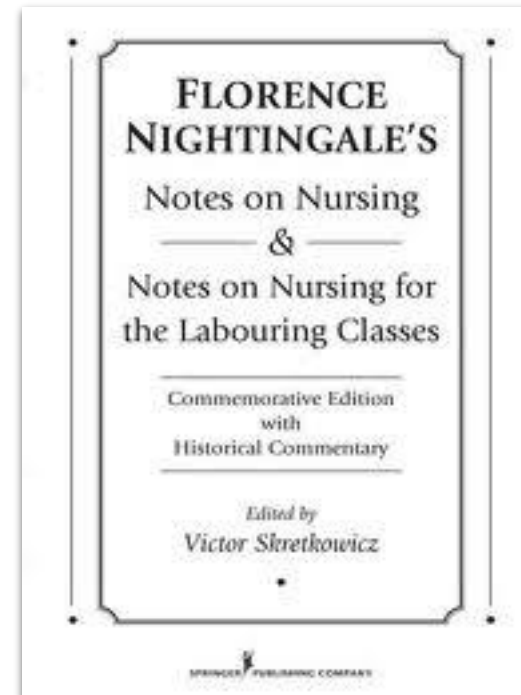
**Cleanliness Theme**

# Notes On Nursing

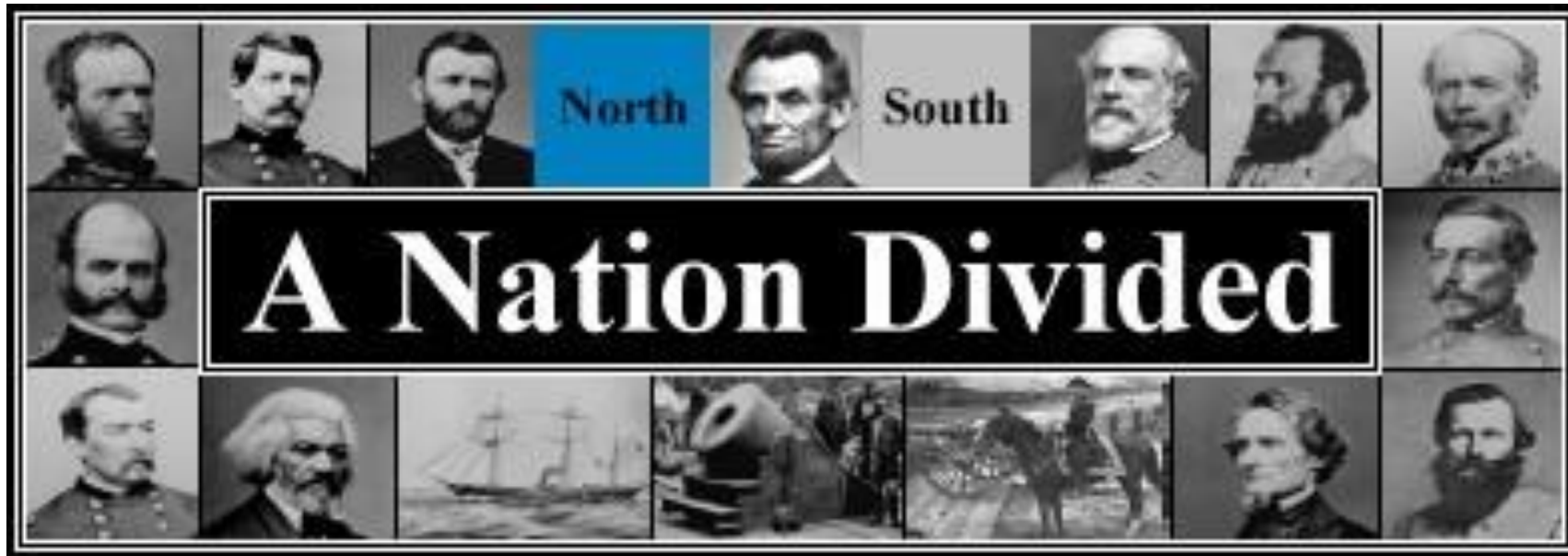
2010 voice recording



1859



# THE AMERICAN CIVIL WAR



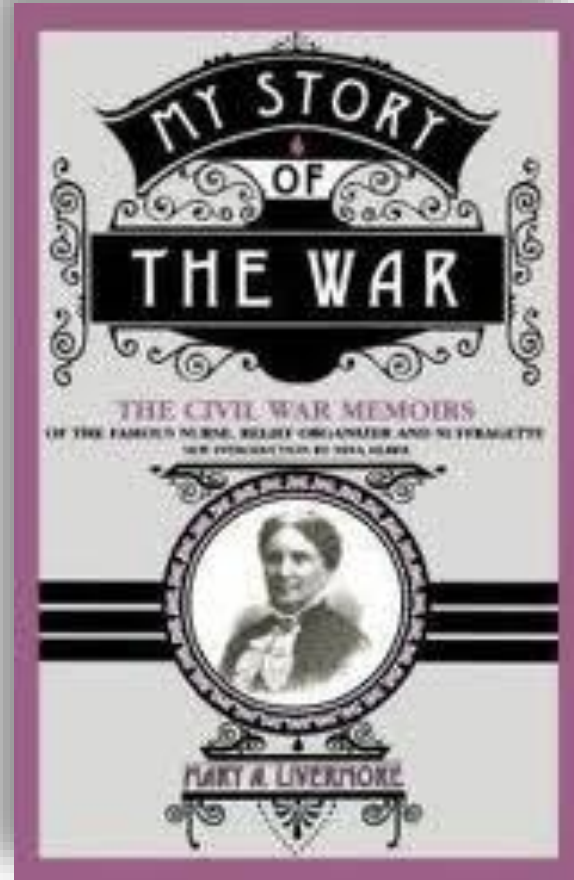
1861-1865





Mary Livermore

1820 - 1905



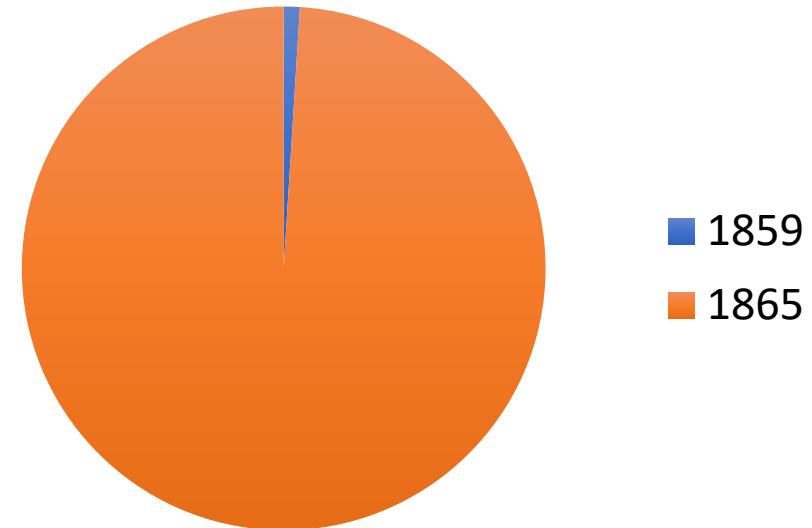
- Abolitionist
- Reporter
- Nurse
- Ran Chicago Office USSC
- Editor "Agitator"
- Women's rights activist
- Prominent Speaker

# REFORM NEEDED - disaster

**Medical Crisis** – Sanitation in camps/hospitals

**Supply Crisis** - Chaotic Volunteer response

|      |           |
|------|-----------|
| 1859 | 20,000    |
| 1865 | 2,000,000 |



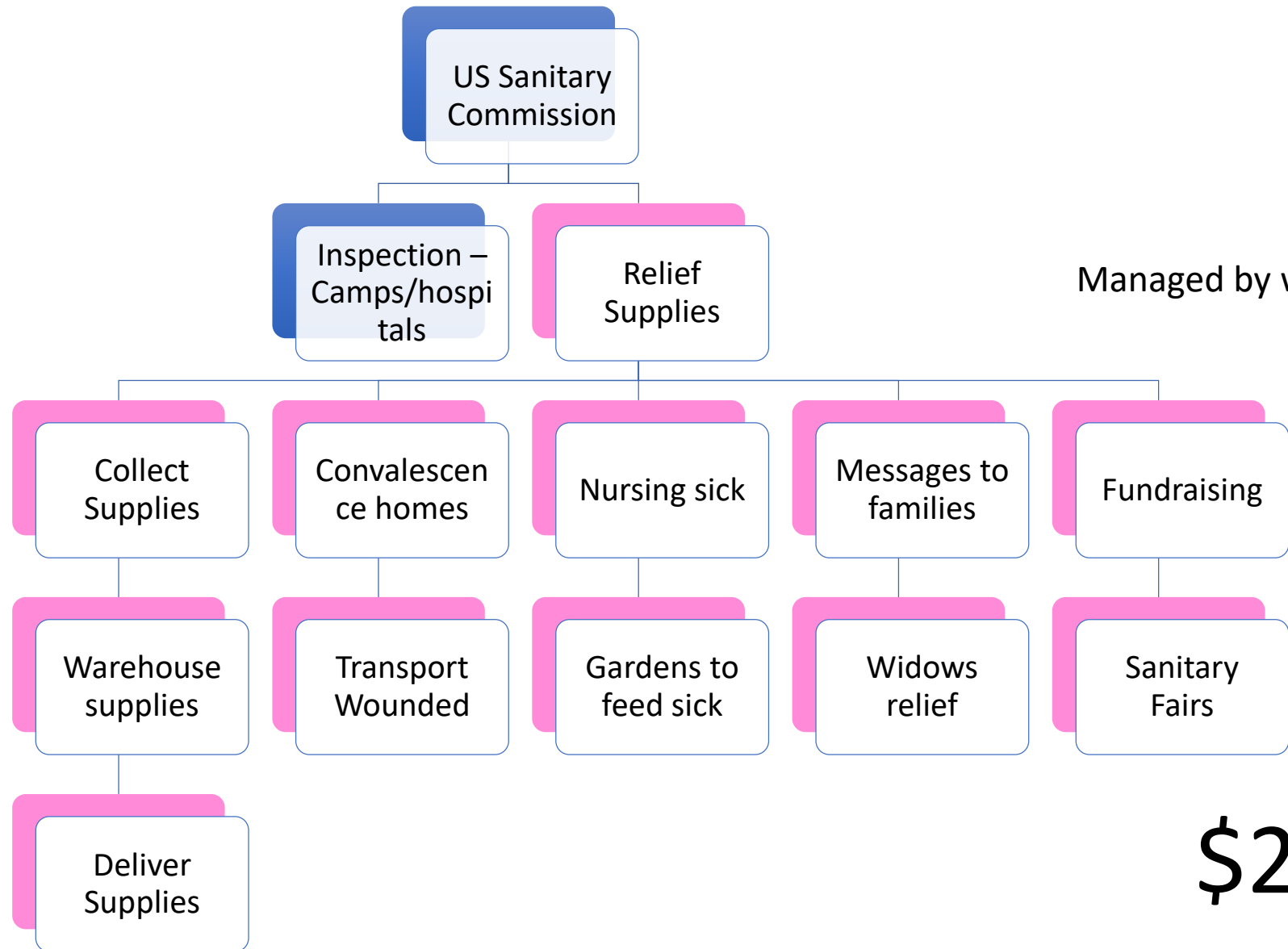
Influenced by British



US Sanitary  
Commission

Inspection –  
Camps/hospitals

Relief Supplies



Managed by women

Network of aid societies  
(women's clubs)

# \$25 Million

Nurse made \$3 week (90 hour week)  
8.33 million weeks of nursing time.



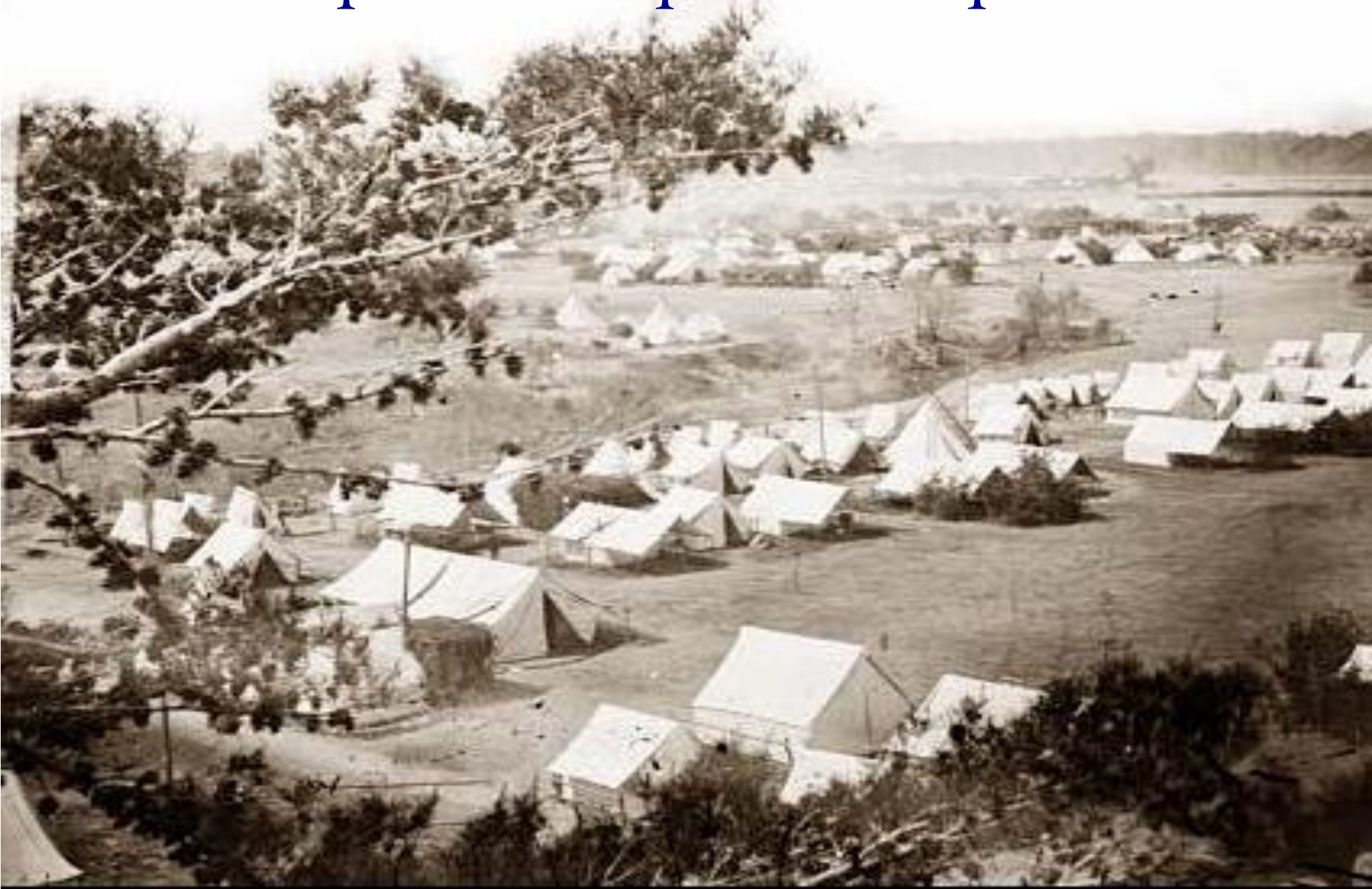
# Nursing

- Dix required nurses “be over thirty years of age, plain almost to repulsion in dress, and devoid of personal attractions” (Livermore, 1887, 246).
- Mature women – **Mother role**  
use the **moral authority** of Mother to serve the Union’s Sons



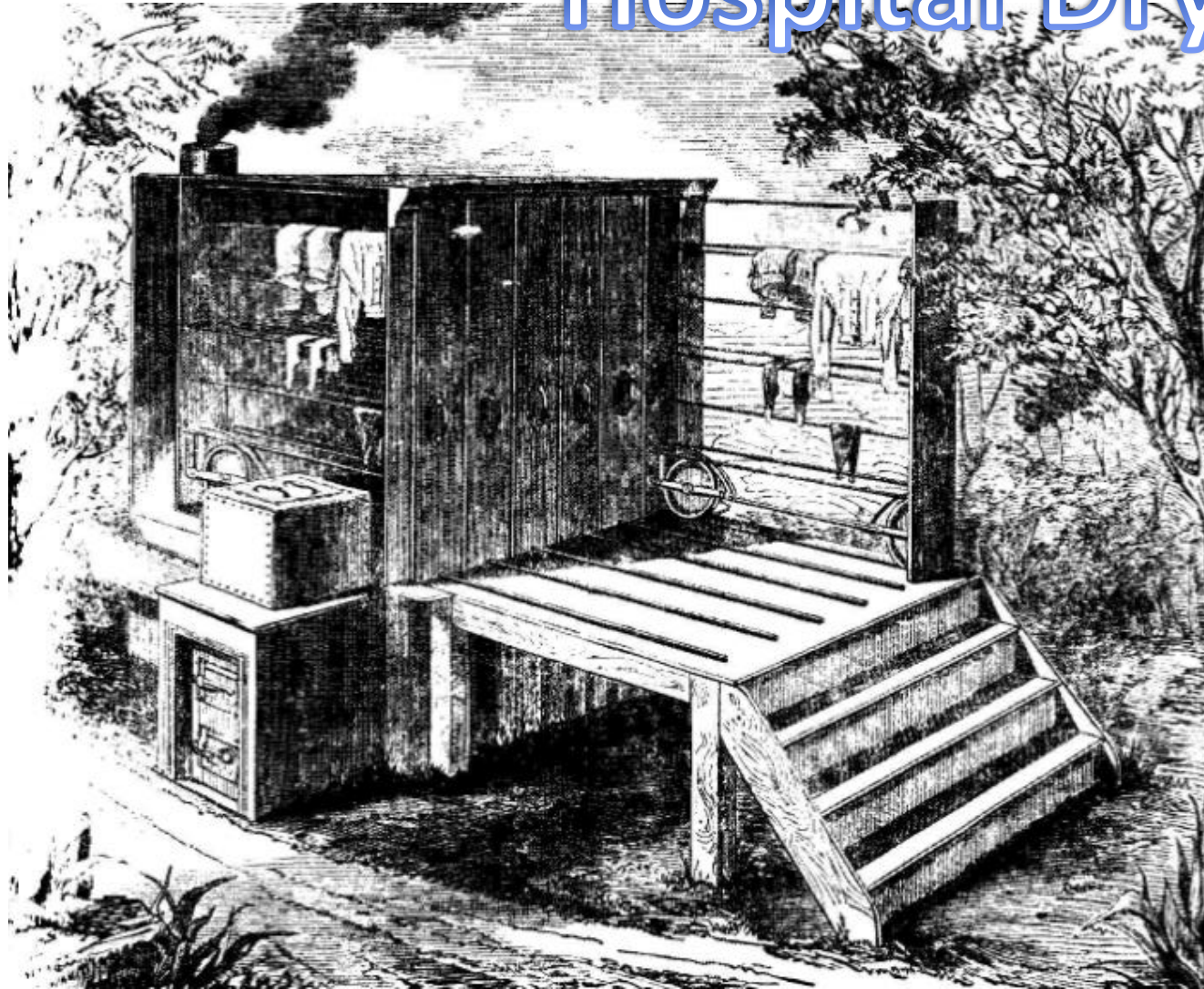
Clean bedding, Clean clothes, Good food

# Inspect Camps & Hospital



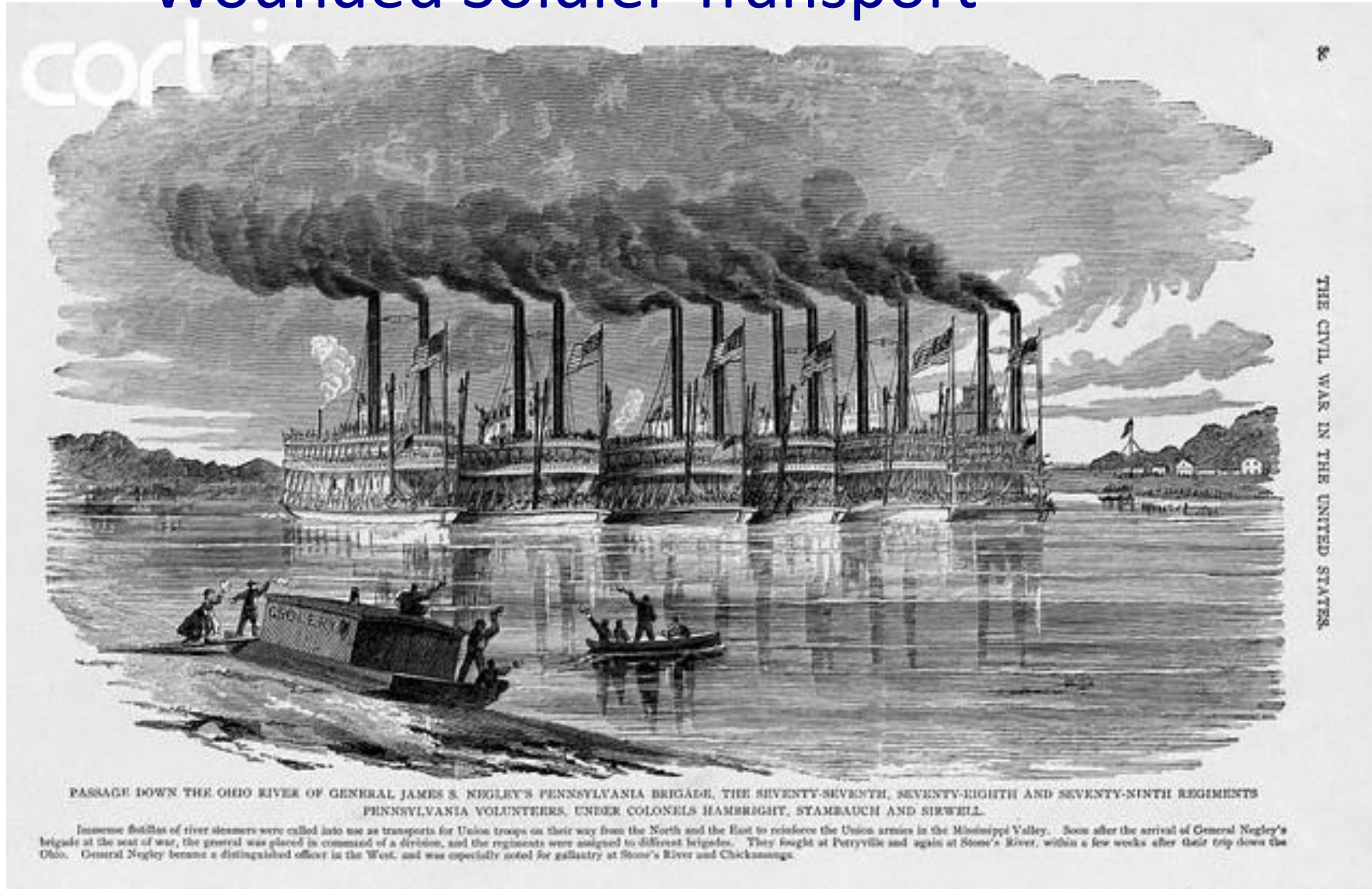


# Hospital Dryer

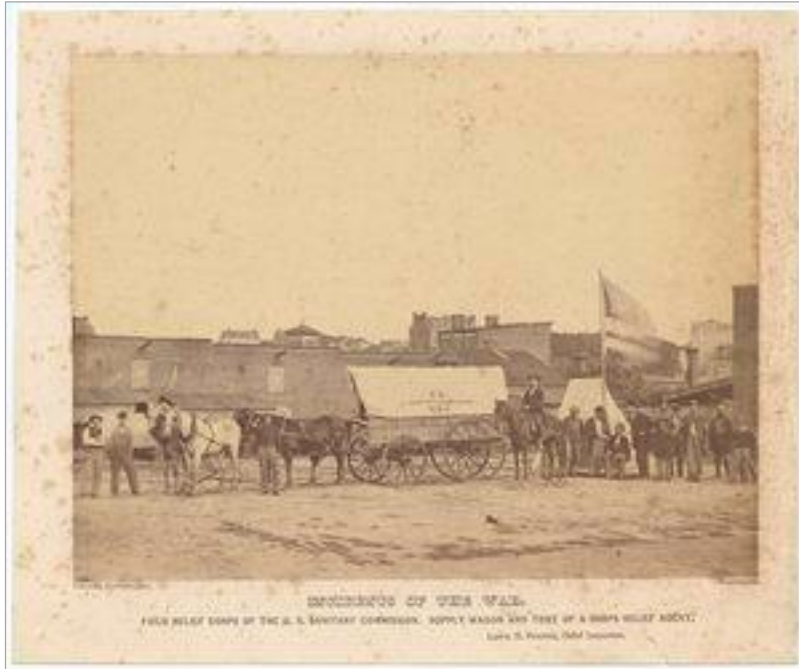


# Supply Transport

## Wounded Soldier Transport







Chicago Hub



Fund raising – sanitary fairs



*I registered a vow that when the war was over I would take up a new work – the work of making law and justice synonymous for women. I have kept my vow religiously (Livermore 1887/1995, 437).*

## Most tangible accomplishment

– **Better education for young women – established colleges (non-profit) for women. Jane Addams went to a college established by Livermore.**

## Intangible accomplishments

- Greater acceptance of women's competency
- Missing link between female activism of the early 1800 and successful mass successful women's movements of late 19<sup>th</sup> & early 20<sup>th</sup> century
- **EXPANDED WOMEN'S SPHERE - Open Door For**

# Key Women's Social Movements 1800 – 1920's

- Ladies Aid Societies (provided underlying network).
- Abolitionist Movement (1800 – 1865)
- Suffrage Movement (1848 – 1920)
- Women's Christian Temperance Movement (1874-1960)
- Settlement Movement (1880 – 1920...1970s)
- Federated Clubs (1892 – 1911) All states
- Women's Peace Movement (1890s -1918)

# Urbanization & Industrialization

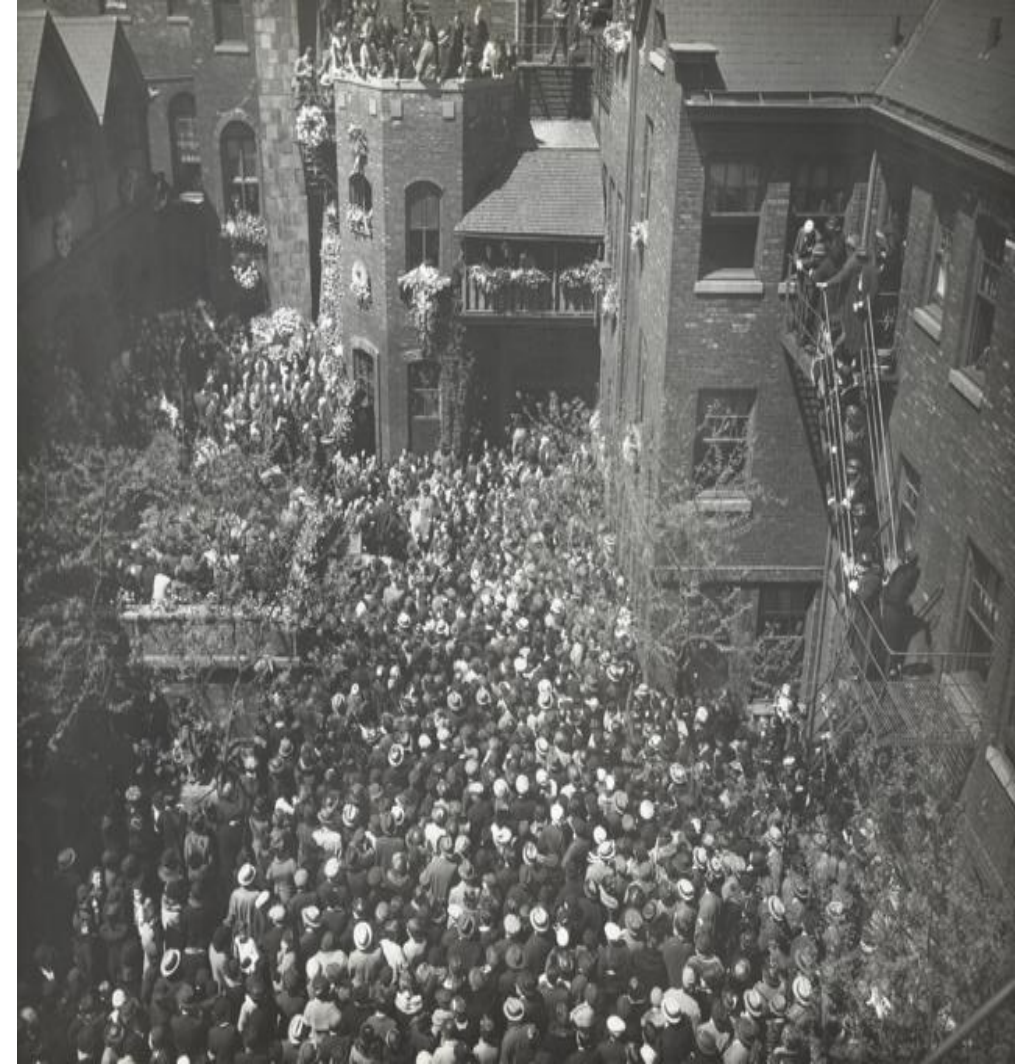
- Sanitation
- Labor and factory abuses
- Child welfare







Jane Addams  
1860-1935



Funeral  
Steps of Hull-House



## Jane Addams 1860-1935

- Founder Settlement Movement
- Leader Suffrage Movement
- Founder of Women's Peace Movement
- Founder of Social Work
- Intellectual Leader Social Reform Movement



# Brief Bio: Jane Addams

- Born: Small Town Illinois
- Father: Owned Mill, Bank and Illinois Senator
- Mother: Died when 2 –
- Rockford College: Valedictorian, Editor newspaper, President of Class, Debate Club President
- Founded Hull House – Chicago Settlement house
- Noted Speaker
- Noted Author 11 books
- Garbage Inspector
- Women's Peace Conference
- Nobel Peace Prize





# Settlement Movement



Toynbee Hall , England

Male Residents only



Hull House, Chicago – Dominant Women's Voice

1889

Both non-profit organizations

400 Settlement Houses Nation wide by 1920





- Child labor laws
- Playgrounds
- Juvenile Courts

**Led social reform**

- Street Cleaning/garbage collection
- Water/Sewer
- Healthier workplace
- NAACP founder





## Hull House Activities

drama classes,  
day care programs,  
coffee house/theater,  
art and labor museum,  
Sunday concerts,  
choir,  
over 25 clubs,  
meeting rooms for organized labor,  
cooperative apartments for young women  
College Extension courses  
Voter Registration  
Speaker series.....

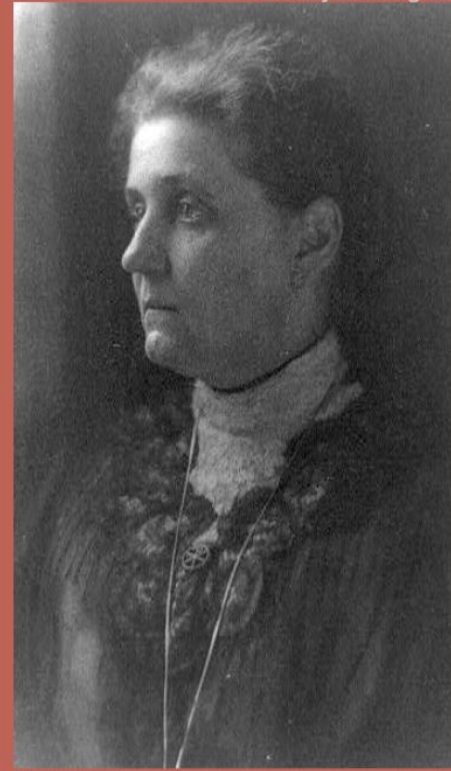
**first in Chicago to establish a public  
bath,  
gymnasium,  
kitchen,  
playground,  
swimming pool.**

Jane Addams

“If Men Were Seeking  
the Franchise”

*Ladies' Home Journal* — June 1913

LET US IMAGINE THROUGHOUT this article, if we can sustain an absurd hypothesis so long, the result upon society if the matriarchal period had held its own; if the development of the State had closely followed that of the Family until the chief care of the former, as that of the latter, had come to be the nurture and education of children and the protection of the weak, sick and aged. In short let us imagine a hypothetical society organized upon the belief that “there is no wealth but life.” With this Ruskinian foundation<sup>1</sup> let us assume that the political machinery of such a society, the franchise and the rest of it, were in the hands of women because they had always best exercised those functions. Let us further imagine a given movement when these women, who in this hypothetical society had possessed political power from the very beginnings of the State, were being appealed to by the voteless men that men might be associated with women in the responsibilities of citizenship.



Jane Addams, 1907

In her own words.

She imagines a world where women are in charge and are considering a petition by men to gain the franchise.

Suffrage Movement

[If Men Were Seeking the Franchise](#)





City as Citadel



Business

Criticized outmoded model  
of city governance



# Municipal Housekeeping

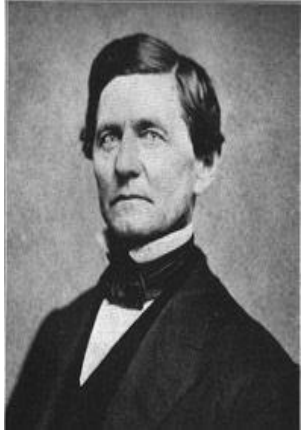


Argued in favor of a  
more caring model of  
city government

Women should contribute  
Addams Broadside



# Paternalism



Public Sphere  
– male domain

Woman's sphere  
Private Sphere



Duty  
Moral Absolutism

USSC

Municipal Housekeeping  
Maternal Social Programs  
Settlement Houses



Expand Women's sphere

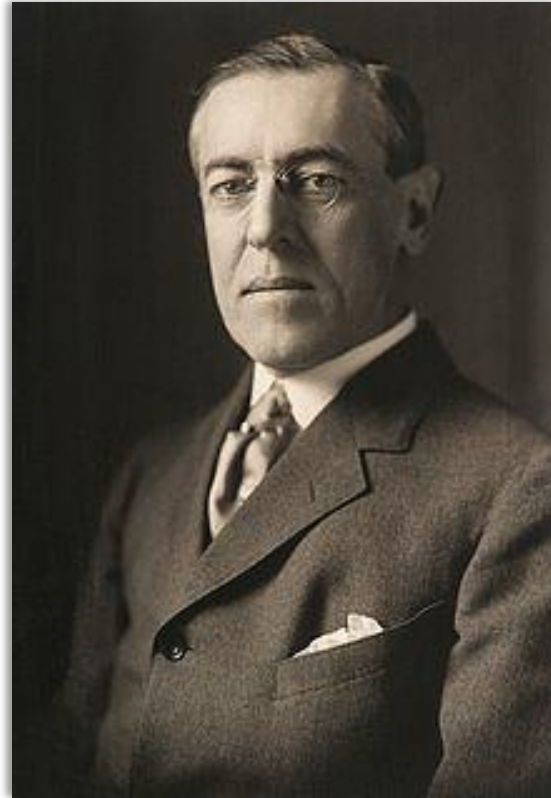
## High Level Political Connections



26<sup>th</sup> President

She nominated Roosevelt for the Progressive party presidential candidate.

**Social Reform Movement**



28<sup>th</sup> President

Wilson nominated her for Nobel prize

**Peace Movement**



31<sup>st</sup> President

She and Hoover worked on post WWI humanitarian efforts

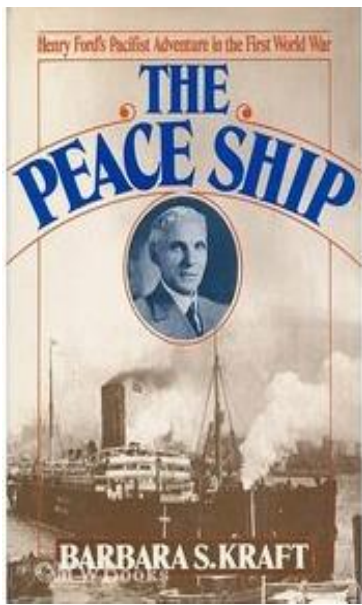
**Responding to Hunger**



## US Peace Movement (1890s – WWI)

- Establish International “**Law and Order**”
- Arbitration
- US Supreme Court as Model
- Peace Good for Business
- Christian Values
- Women’s social policy agenda





Peace Organizations (Elite)  
Social conservative  
National political figures  
Important Businessmen



Taft

Ford



Roosevelt



Wilson



Addams



Carnegie



# International Peace Conference

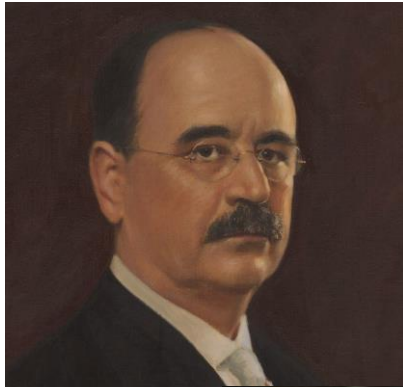


The Hague 1899 & 1907

World leaders actively sought new institutions, legal frameworks and policy tools

- multilateral treaties
- Permanent Court of Arbitration
- 1<sup>st</sup> formal statement laws of war, war crimes

War replaced by a system for the peaceful settlement of disputes among states.



Sponsored by Baylor and  
Texas Federation of  
Women's  
Clubs

# THE TEXAS PEACE CONGRESS

HELD AT

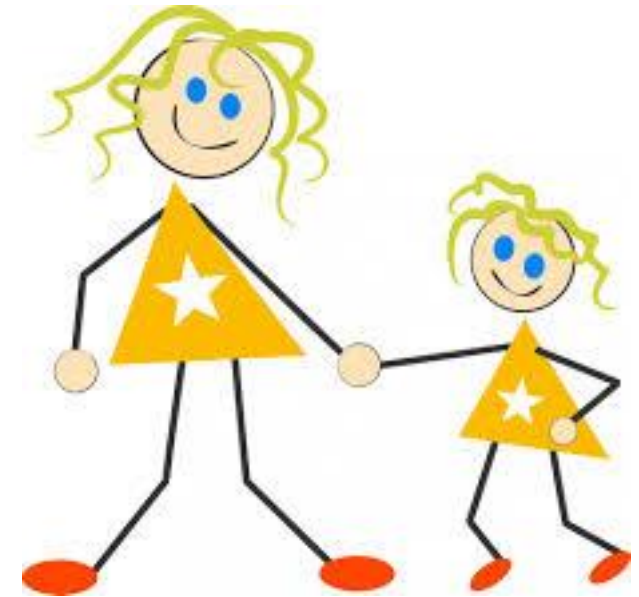
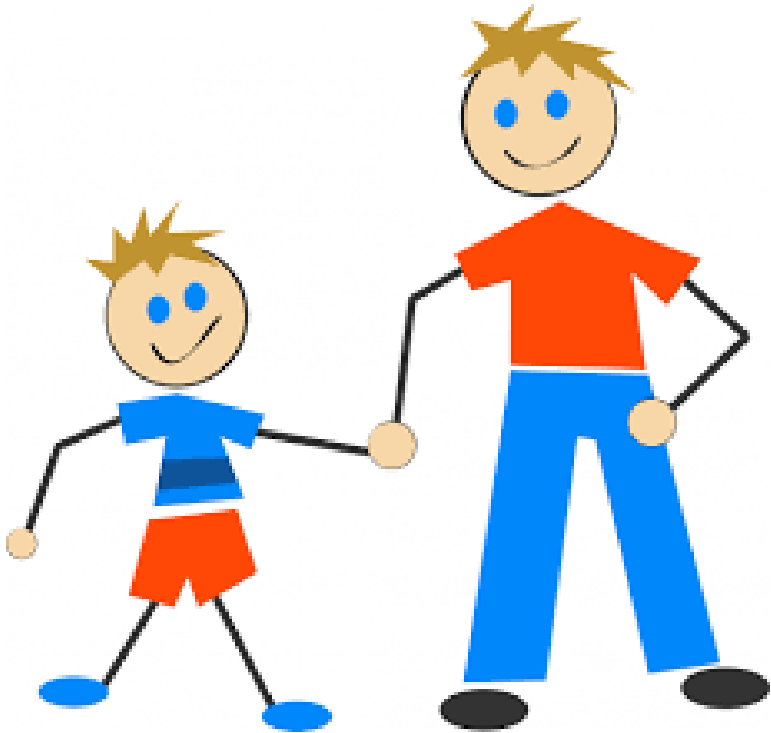
BAYLOR UNIVERSITY

1907



Partial view of Baylor University Campus, where the Peace Congress was held

# US & Texas Peace Movement





Aug. 1914

World War I

Woman's Peace Party established – **Jane Addams Leader**

## Maternal Instinct

- Women have an instinctive and rational opposition to war
- Women & Children suffer but not at table
- Need increase participation of women in politics.
- Linked to Suffrage



PRESIDENT WILSON SAYS:  
"This is the time to support Woman Suffrage."



PRESIDENT WILSON  
"Urge the people of New York to send  
for Woman Suffrage"



## Social Claim



International Committee of Women for Permanent Peace

April 1915





# INTERNATIONAL CONGRESS OF WOMEN

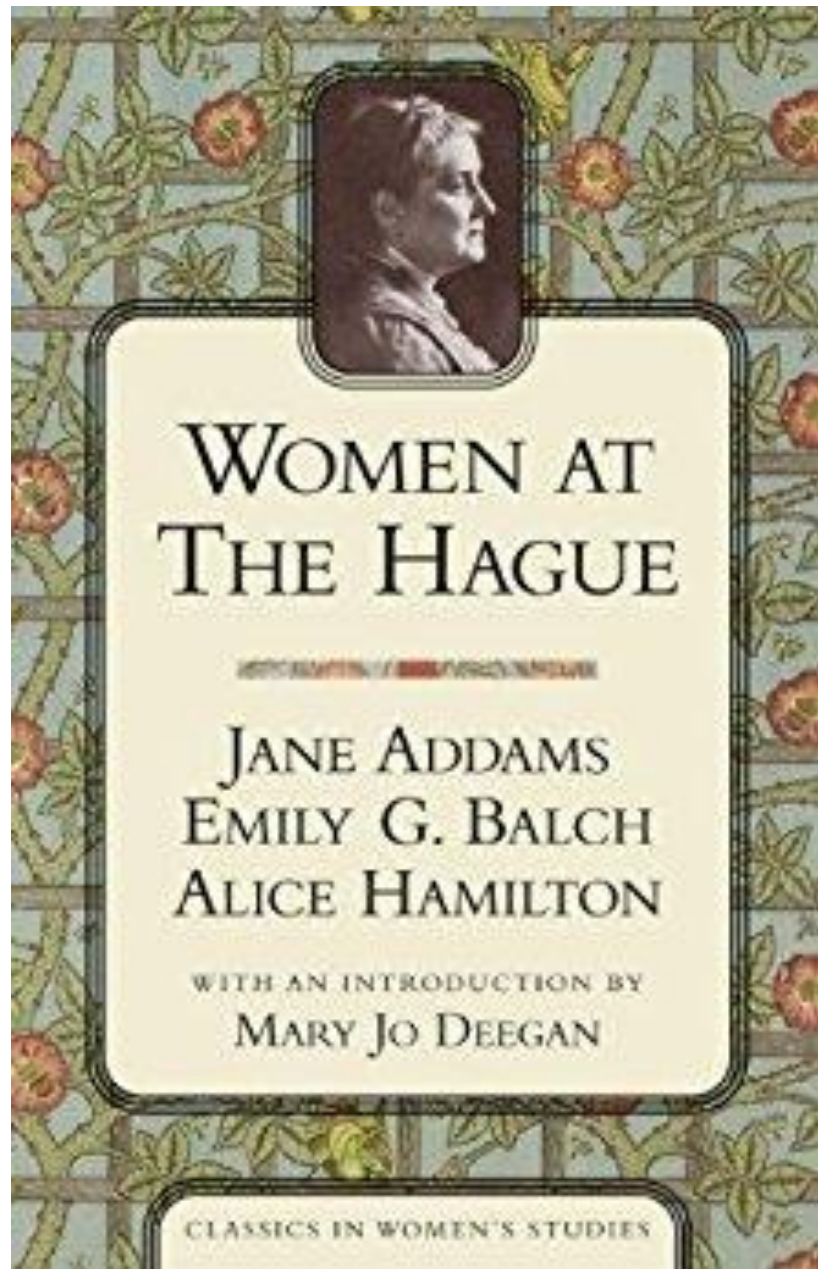
THE HAGUE — APRIL 28<sup>TH</sup> TO MAY 1<sup>ST</sup> 1915

---

---

## RESOLUTIONS ADOPTED

- Begin peace negotiations immediately
- Conference Neutral Nations  
Continuous Mediation
- Future disputes – arbitration
- Organization “Society of Nations”
- Acknowledge women’s suffering during war
- Give women right to vote
- Women participation in Peace Processes



## Peace Delegation





# Jane Addams Public Timeline



Lost Historical Memory

1889

Celebrated

1915

Demeaned  
Traitor  
Communist  
Silly old woman

1935

DOJ Surveillance



World War I

Like an extinction event

For Peace Movement

- German sympathizers/traitors
- Communist sympathizers
- Quick to judge/unsupported claims – press/politicians



Suffrage Leader  
Carrie Chapman Catt





Suffrage Movement  
Used WWI as a way  
To Prove Women's  
value

War ended in 1918

19<sup>th</sup> Amendment 1919

# Key Women's Social Movements 1800 – 1920's

- Ladies Aid Societies (provided underlying network).
- Abolitionist Movement (1800 – 1865)
- Suffrage Movement (1848 – 1920)
- Women's Christian Temperance Movement (1874-1960)
- Settlement Movement (1880 – 1920...1970s)
- Federated Clubs (1892 – 1911) All states
- Women's Peace Movement (1890s -1918)

# Federated Clubs

**Supported the Maternal Policy Agenda  
– Programs for women and children**

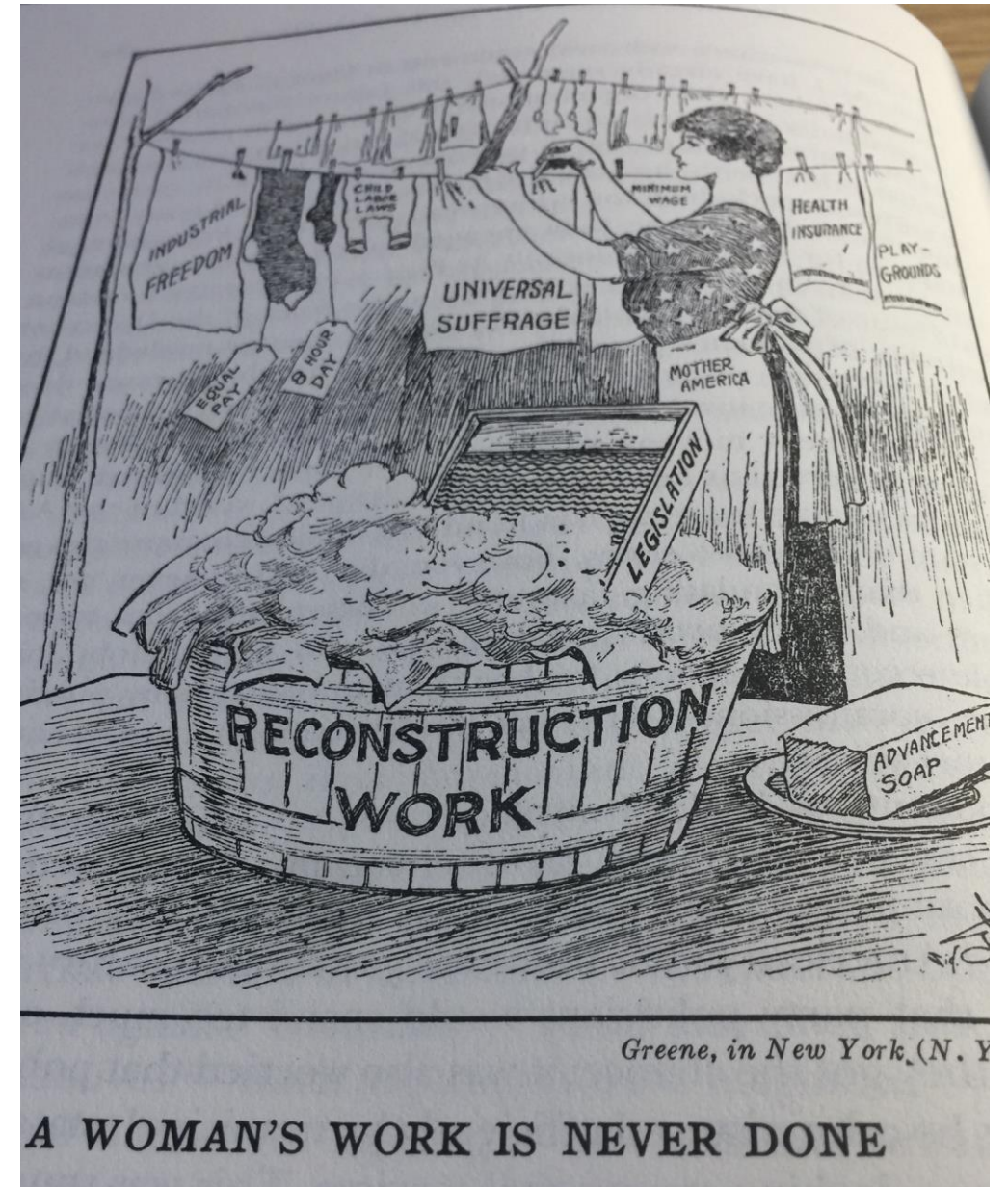
Women's Bureau

Literary clubs – Libraries

Playgrounds

Municipal Housekeeping

Soap and Water Days - Texas



2015

Mrs. Pennybacher



Official Publication of the Texas Federation of Women's Clubs

Organizing to influence Legislature  
Targeting **family violence**



**NOW Is The Time!!!**  
**TFWC - Speak Up!**  
**Be Counted In The Texas**  
**Legislature This**  
**Session Via**  
**← This**  
**Purple Card!!**

- Act Fast - Needed in March!!
- Electronic Version @ <http://www.tcfv.org/purplepostcard>

*We prioritize our appropriations efforts for family violence services above all other activities at the Legislature. The Purple Postcards Project represents our premiere approach to galvanizing our constituents and the legislature in support of funding.*

*--Texas Council On Family Violence President Gloria Terry*

**This is our organization's opportunity to**  
**"SPEAK WITH ONE VOICE!"**

- Postcards are easy to fill out with pre-paid postage.
- Available through club presidents, also online.
- Can count as club project.
- Time is of the essence, **HURRY!! Needed in March.**

*Despite great strides in our state and communities, the voices of family violence victims are still too often silenced. Each of these purple postcards gives voice to those survivors, sending a powerful message to the Legislature that domestic violence services must be a priority.*

*-- Texas State Senator Jane Nelson*





Texas Federation of Women's Clubs Headquarters Austin